

Permaculture design process

- Sharing a co-operative vision



Design process

- **Observation** Protracted & thoughtful observation rather than protracted and thoughtless labour.
Work is something to be avoided
- **Wait one year**
- **We are surrounded by insurmountable opportunities**
- **Hold water and fertility as high (in elevation) on the landscape as possible**

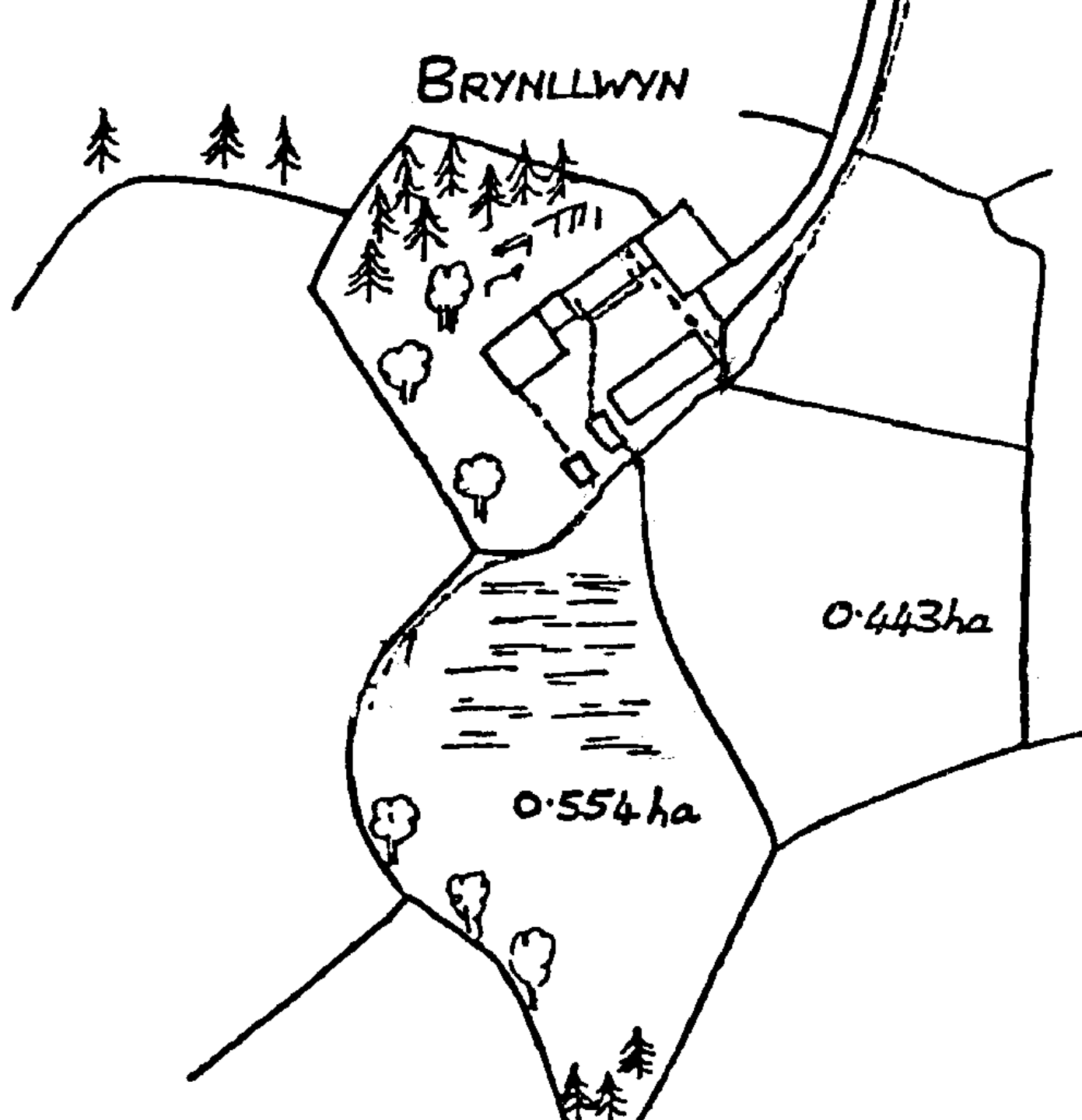
Design

- Design from patterns to details
- Its all harvest, maintenance = harvest
- Minimum input for maximum yield
- **Local Focus** "Think globally - Act locally"
Grow your own food, cooperate with neighbours. Community efficiency not self-sufficiency

Multiple Functions

- **Every function is supported by many elements - Redundancy**
all important functions can withstand the failure of one or more element.
- **Every element is supported by many functions** choose elements that performs as many functions as possible.

BRYNLLWYN



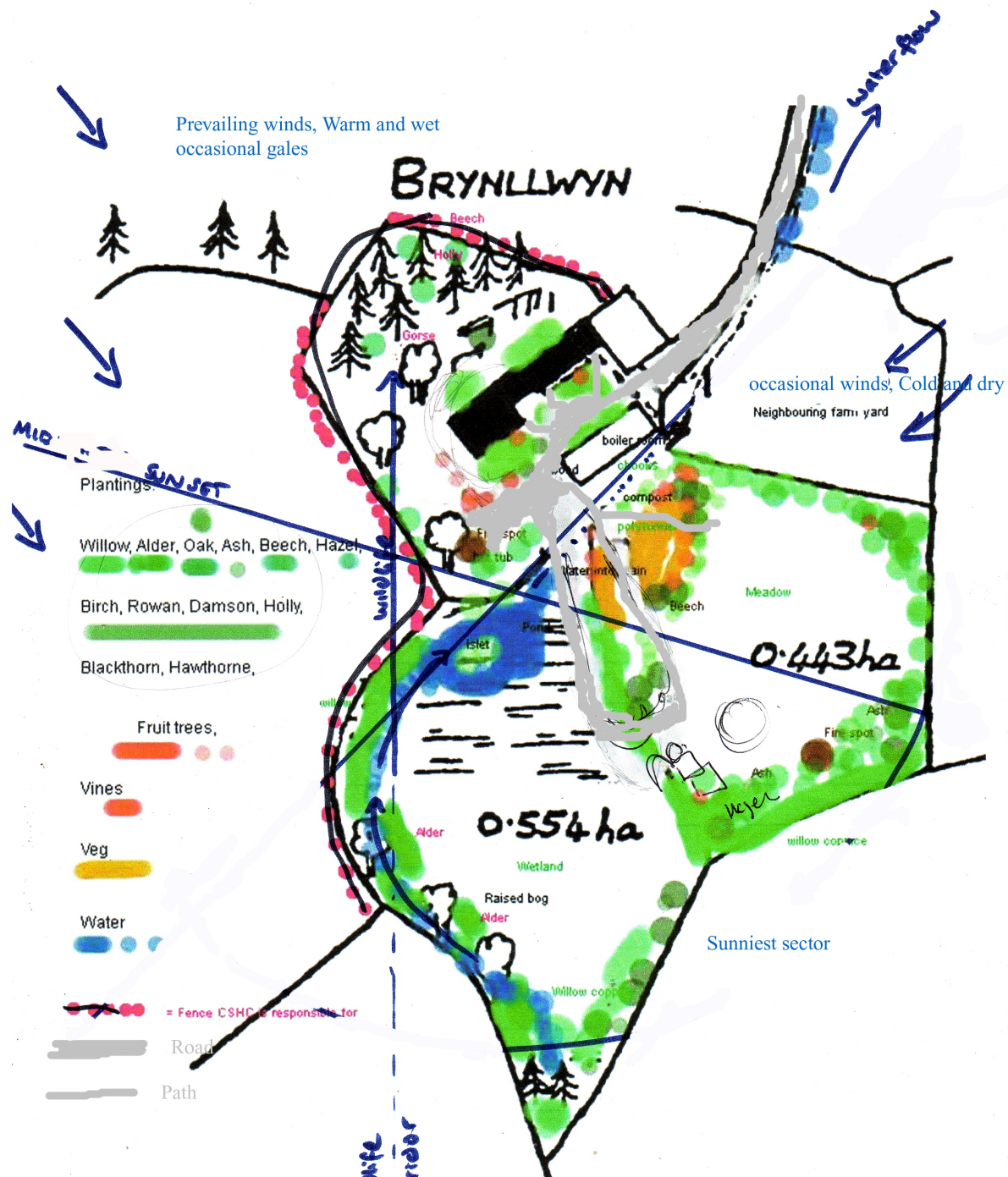
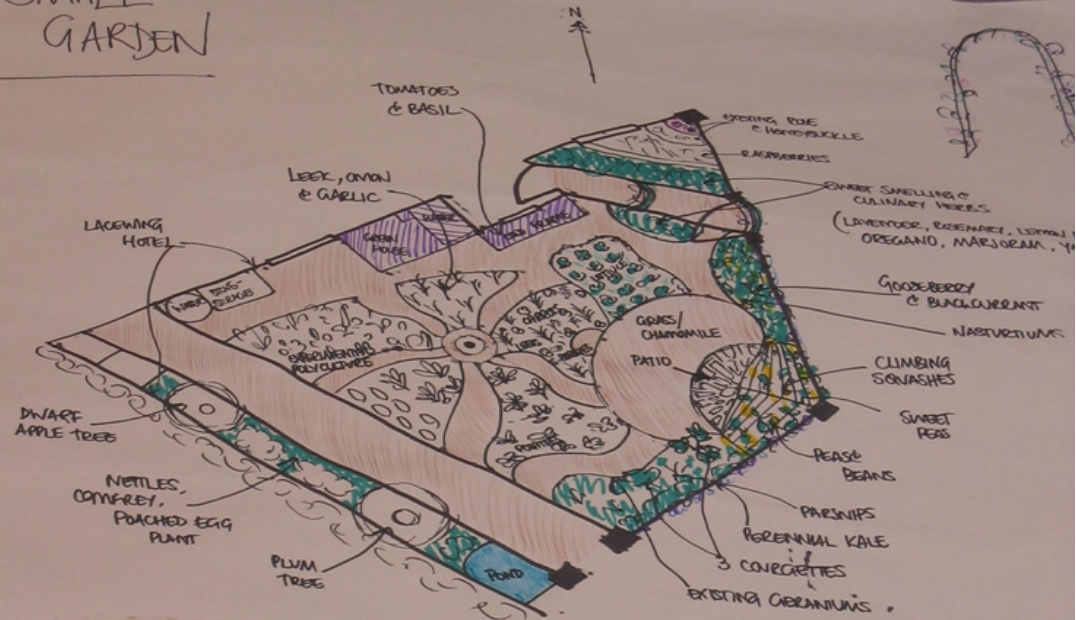




Image © 2008 Bluesky

SMALL GARDEN



SARAH'S CIRCULAR SMALL- HOLDING → to Infinity & Beyond!

Scale:
0.75cm : 1m



POLYTUNNEL











Test bed
ONE
22nd May. Planted.
Brassica, cress, leaf beet,
Mixed Salad, mustard
cress, Beans - pole,
Soil - compost, manure,
Sea weed.











Chickenshack 2015

