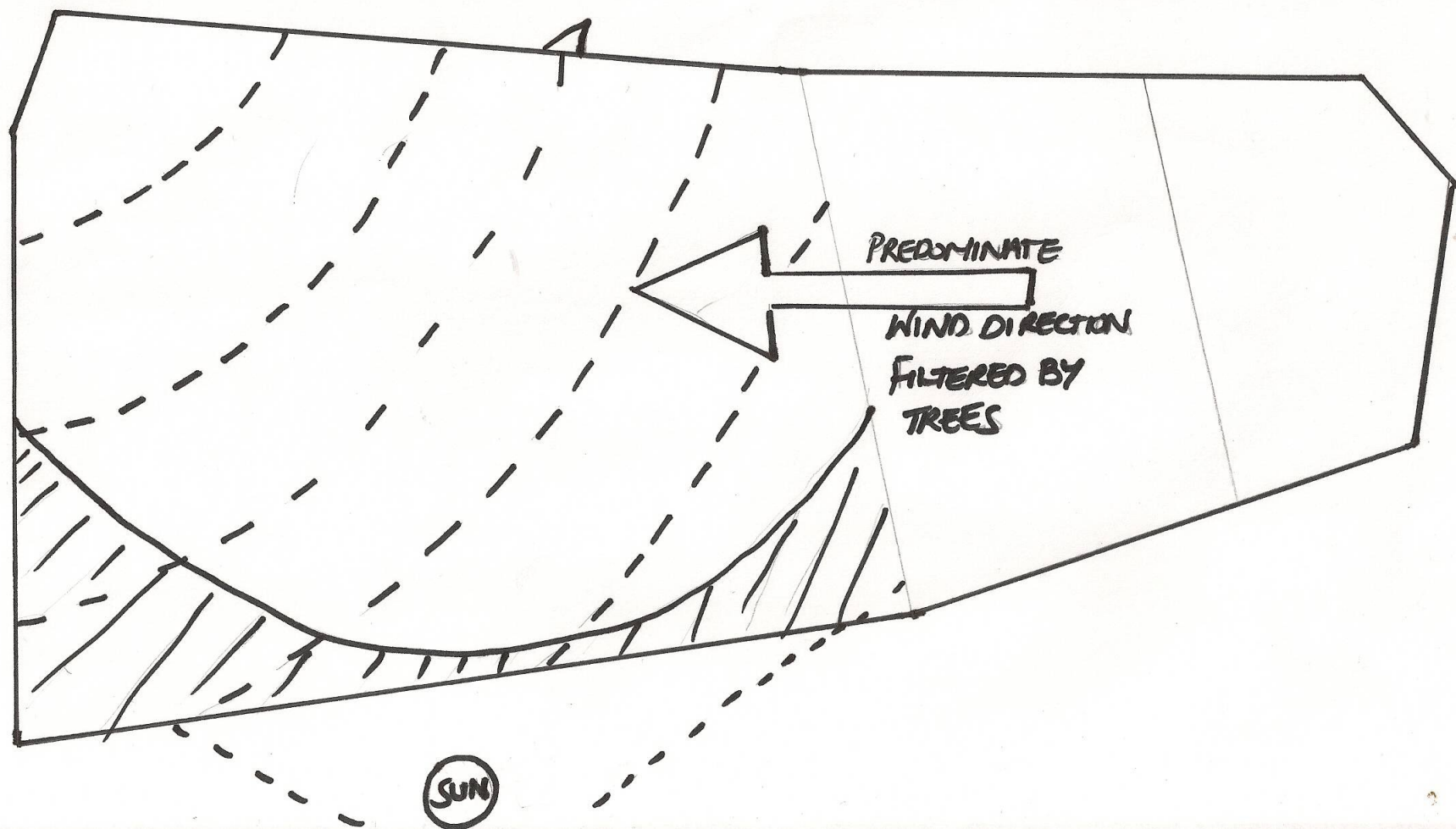




Basemap 1



SECTOR ANALYSIS - SUN & WIND & SLOPE



Site features and energy

- Sunny site – not shaded by buildings
- Sheltered from the predominant wind by trees
- Clay soil - uncultivated
- No water source on site
- Uneven rough ground
- Overgrown -lots of clearing needed
- Lots of saplings
- Possible conservation area – ant hills



Constraints

- Money - £120 so far
- Limited resources – building materials
- Time/ labour
- Limited awareness/involvement so far
- Security ? ?
- Residents needs – privacy, noise

Tools

Needed please

The youth club needs tools to make
a garden for the village hall
if you have any old or unwanted tools
could you please contact
The village shop

Many thanks



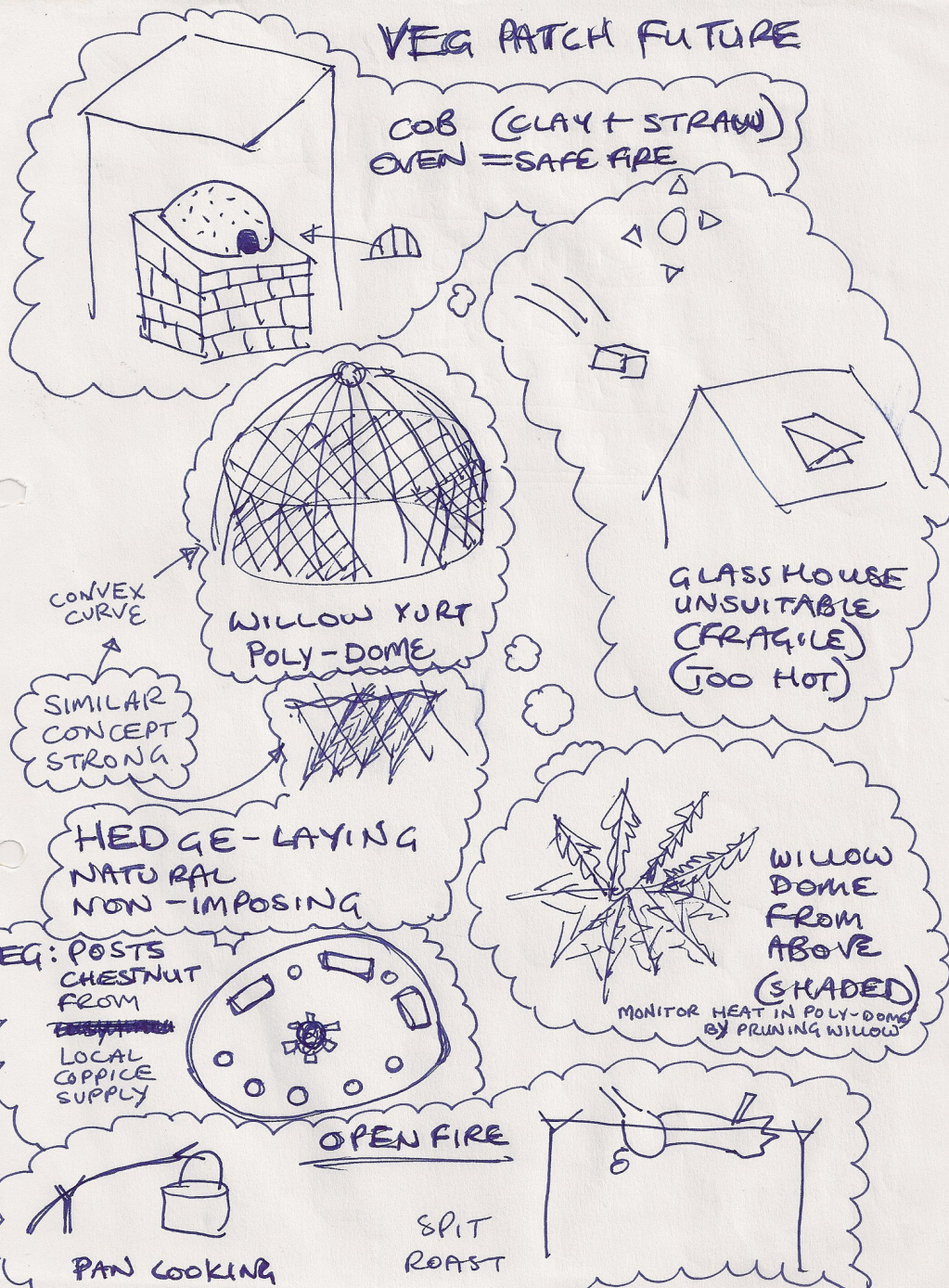
Achievements so far

- Negotiations with the housing association and council
- Planning meetings – first one in Nov 2009
- Survey of site carried out
- Basemap drawn
- lots of ideas for the garden
- Clearing carried out– weekly volunteer day

Resources

- Some funds raised
- Jack's skills and knowledge as a gardener and local knowledge/ community relationships
- Local support
- Donated tools
- Chicken wire, posts, saplings

VEG PATCH FUTURE



Goals

- Community involvement & engagement
- Social enterprise - creating a social space for all and activity in the village.
- Education, training & awareness - demonstration garden
- Starting the transition process
- Food production for local people
- Wildlife habitat

Summerpool Gardens



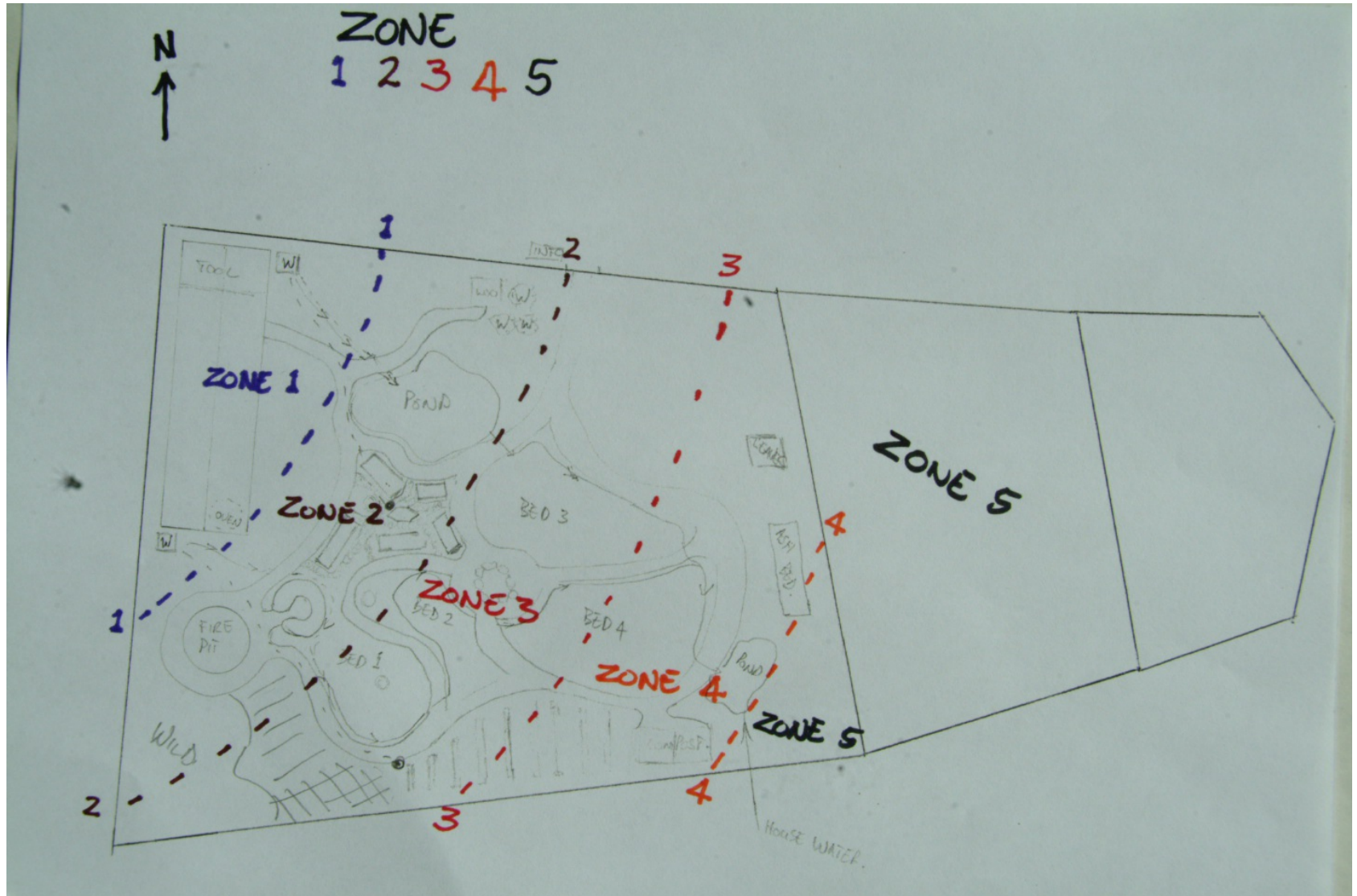


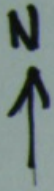




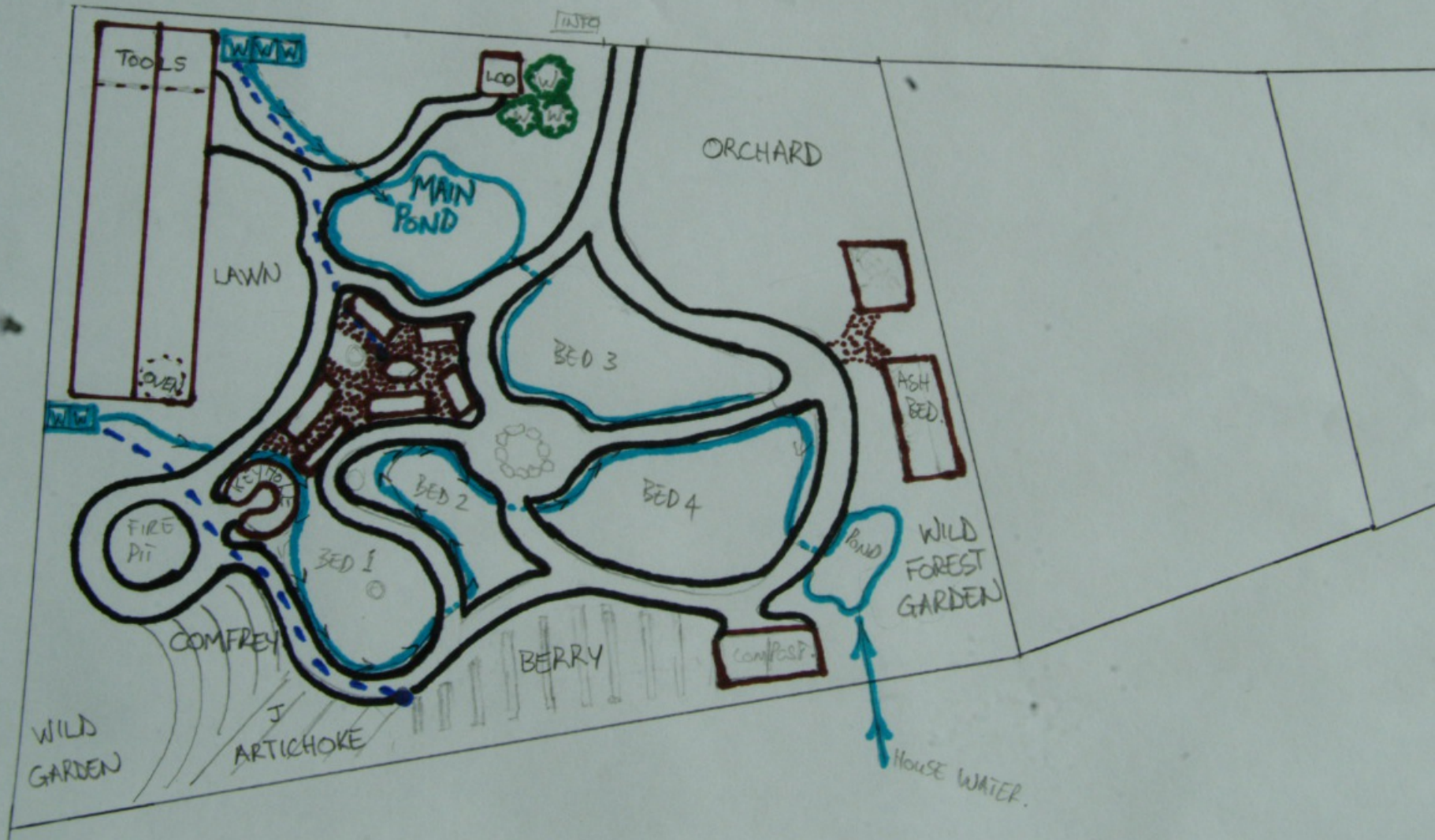


Zoning

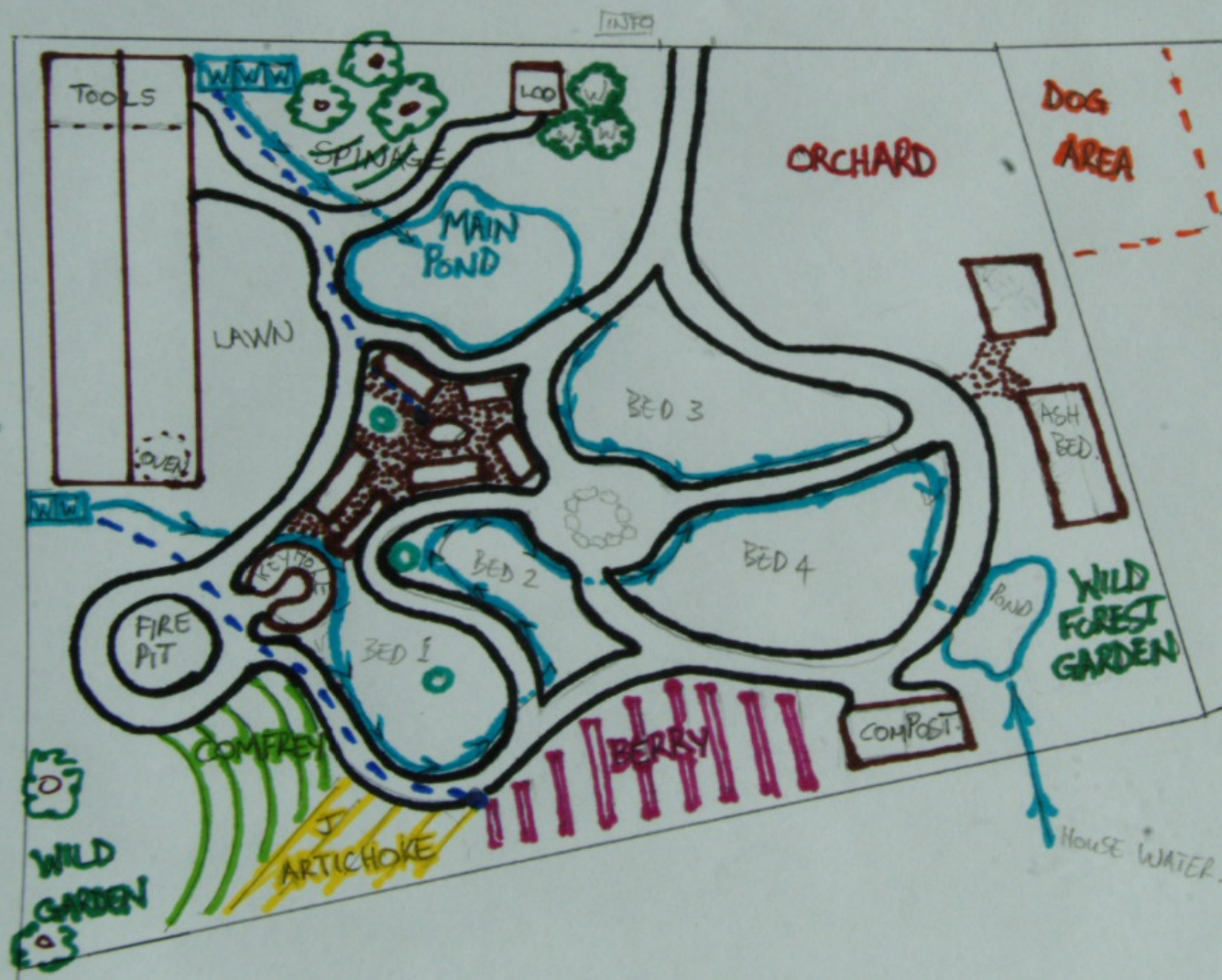




Paths, water and layout

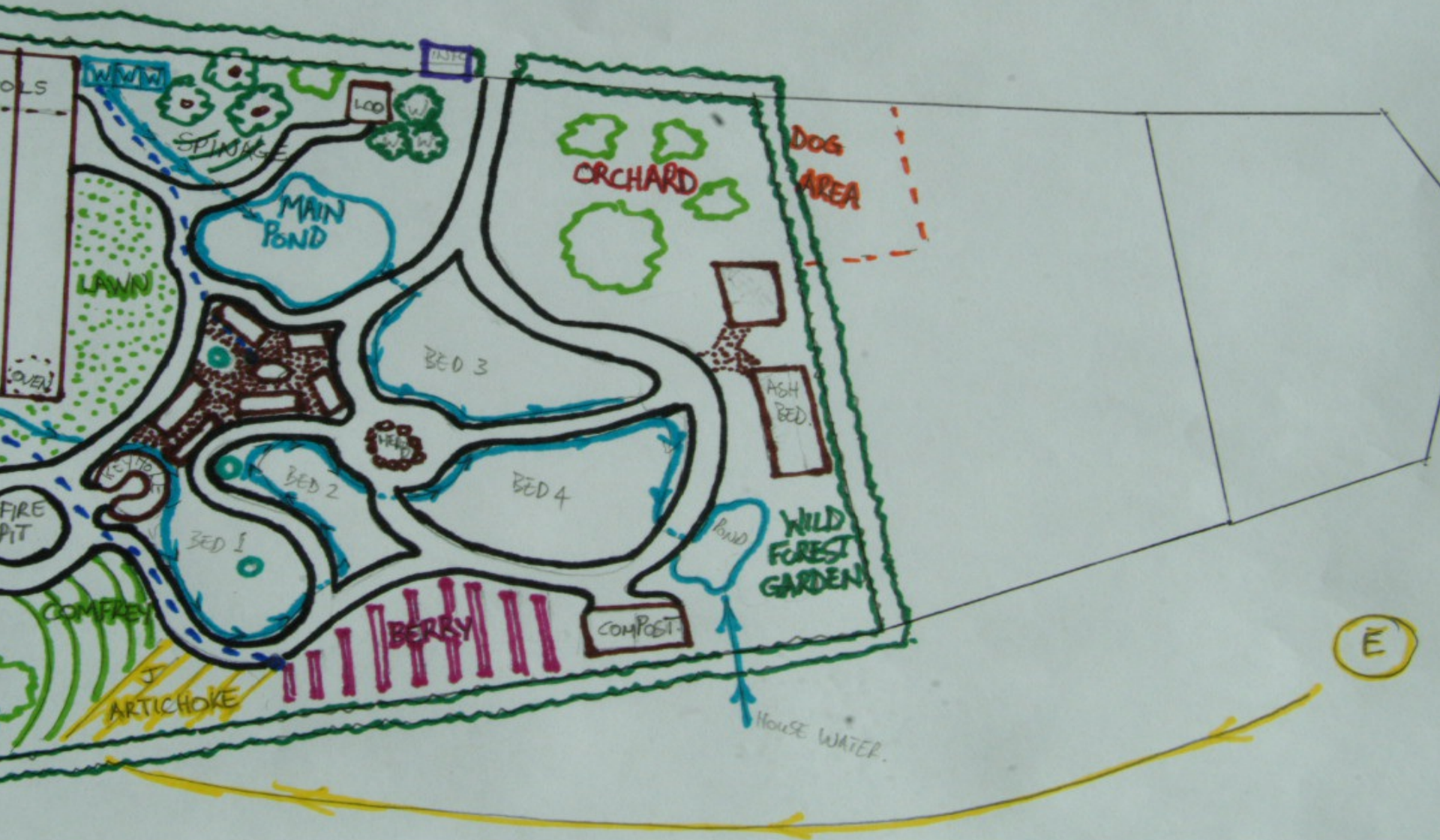


N
↑



SUMMERPOOL GARDENS

Sun and areas



David Holmgren's new Design principles

Permaculture Design Principles

1 Observe and Interact

Beauty is in the eye of the beholder



2 Catch and Store Energy

Make hay while the sun shines



3 Obtain a Yield

You can't work on an empty stomach



4 Apply Self-regulation and Accept Feedback

The sins of the fathers are visited on the children unto the seventh generation



5 Use and Value Renewable Resources and Services

Let nature take it's course



6 Produce No Waste

A stitch in time saves nine
Waste not, want not



7 Design from Patterns to Details

Can't see the wood for the trees



8 Integrate Rather than Segregate

Many hands make light work



9 Use Small and Slow Solutions

The bigger they are, the harder they fall
Slow and steady wins the race



10 Use and Value Diversity

Don't put all your eggs in one basket



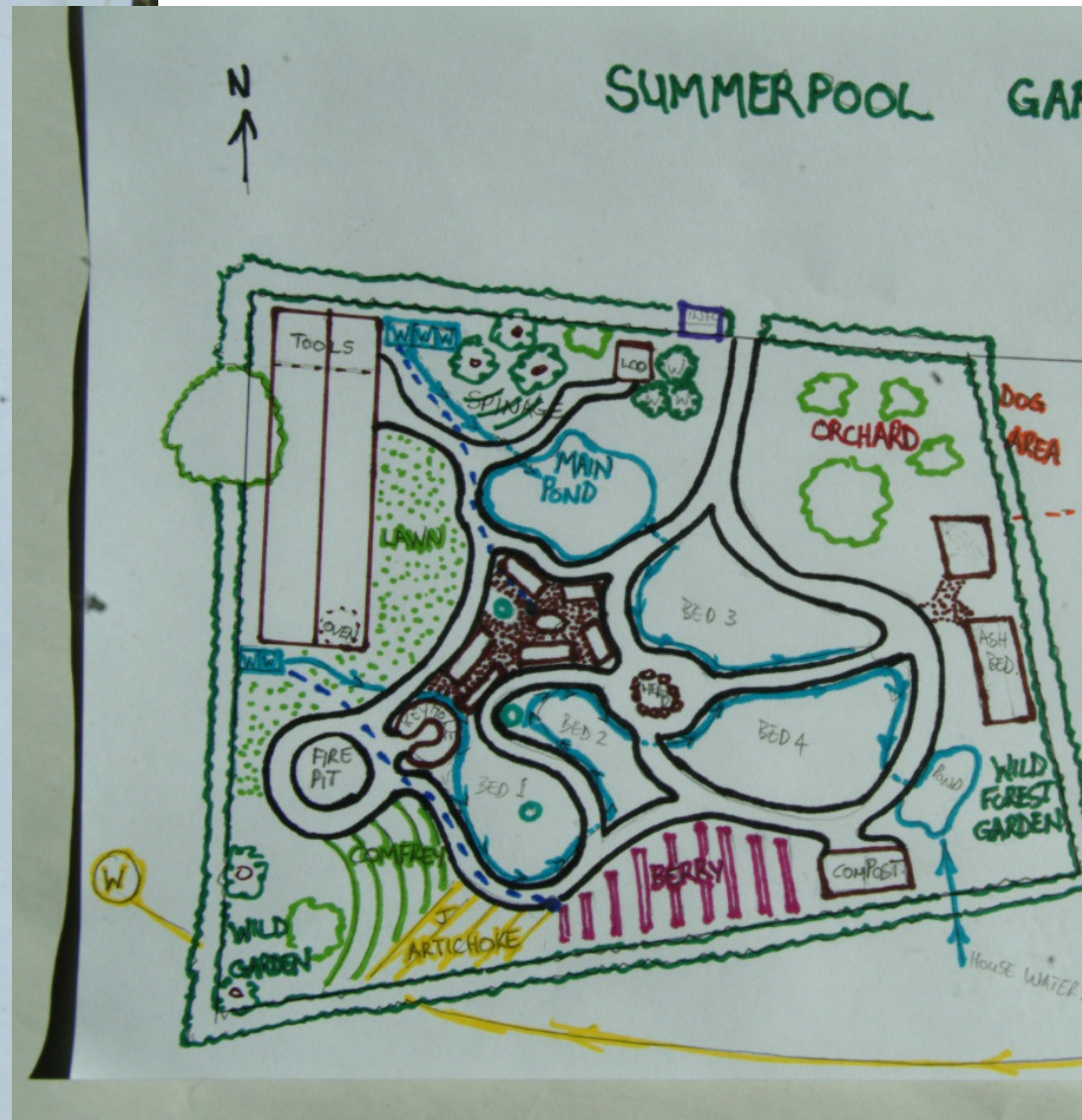
11 Use Edges and Value the Marginal

Don't think you are on the right track just because it is a well-beaten path



12 Creatively Use and Respond to Change

Vision is not seeing things as they are but as they will be



IMPLEMENTATION

PLAN

RESOURCES - LABOUR, MATERIALS, CASH INCOME (small)

* VOLUNTEER DAYS

Regular work day/1/2 day

- ongoing work throughout the year - 1st focus clearing sections of site
- provides opportunity for regular harvest with surplus produce for sale in community shop
- Salads, herbs, fruits etc } cash income
- small plants for sale

* TRAINING / WORKSHOPS

1/2 Day 2 day } Sessions
1 Day Series of }

- Provide resources to create key functions within the garden
- enables learners to have a go at practical permaculture
- Provides visitors to the garden with demonstrations of permaculture in action
- could charge to attend - therefore creating cash income

1ST EVENT

LAUNCH

- STEERING GROUP
- TASKS, ROLES & RESOURCES
- SUPPORTERS, FRIENDS OF ETC
- Publicise through various

networks

- 1 - People that might be willing to raise seeds/plants to supply garden

* COMMUNITY CELEBRATION EVENTS

ie - Blossom day, blossom ring day, winter solstice, summer solstice, harvest, Midsummer etc

1 per season

link to other local events

ie H Energy Weekends

H Art Weekend

- Engages local community
- Celebrates the garden & the seasons
- Gives opportunity to review the design

SOURCING MATERIALS

- Start to build a wish list of resources ← need time/group to drive forward

CASH

- for some materials
- printing / publicity

ie 5x 1000ltr storage tanks for water (can build up to 5 over time)
uprights for roof - can be done in sections (or seek grant approx £1,000)
roof materials

↓ Seek guest tutors for workshop / training

- Seek to obtain resources from within local community

- Donations, via Village pub, community shop, local businesses farmers, freecycle & publicise wish list at garden events.

SEED / PLANT SWAPS ETC

- Could seek some cash funding to purchase resources (small grants - Bullmer foundation, co-op, local authority, H A - seek advice - funding mainly for community education space)

- Cash income - donations to attend training events, donations @ community events, plant sales, sale of products ie herbs, salad, fruit. Make & maintain link with community shop.

* WANT TO SEEK FUNDING FOR INTERPRETATION BOARD @ SITE ENTRANCE (within 2 years?) & TRAIL FOR PERMACULTURE PRINCIPLES

TRAINING / WORKSHOPS

SEQUENCE

1st priority - clear sections of the site that are going to be developed via Volunteer days

- Then ^{make} ~~site~~ / Set out paths around the site - Paths can be built
Wood chips etc as resources
allow

THEMED TRAINING / WORKSHOPS (1/2, 1, 2 day or Series of days)

Some activities will be dictated by seasons, others by available resources incl tutors
can be flexible on when they take place / sequence depending on need by
community / interest etc

Lots of practical events - gets stuff built! Can be translated / spread learning / people take knowledge away
- once built - interpretation/info to explain elements

Linked
by sequence

• COMPOSTING & LEAF MOULD (early in development of garden)

• WATER HARVESTING (early - can be done over a number of sessions)
↳ guest tutor J. ABREHAMS?

• BUILDING A SHELTER (can be done in sections / over several sessions)

• COMPOST TEAS (MANURE, COMFREY, NETTLES)

• FOREST GARDEN

• PROPAGATION - Cuttings / slips / hardwood / soft wood / grafts etc

• RAISED BEDS

• HERB SPIRAL

• KEYHOLE GARDEN

• GREEN WOODWORKING ^{inc making gate for site}

• EARTH OVEN

• FRUIT TREE PRUNING (Andromeda continued)

• TREE BOC ^{Source willow from J.}

• INTRO TO PERMACULTURE

• PDC COURSE?

• COPPICING

BENEFITS COMMUNITY / REGION - by providing a demonstration of how permaculture works on a small
Scale with the local community at its heart