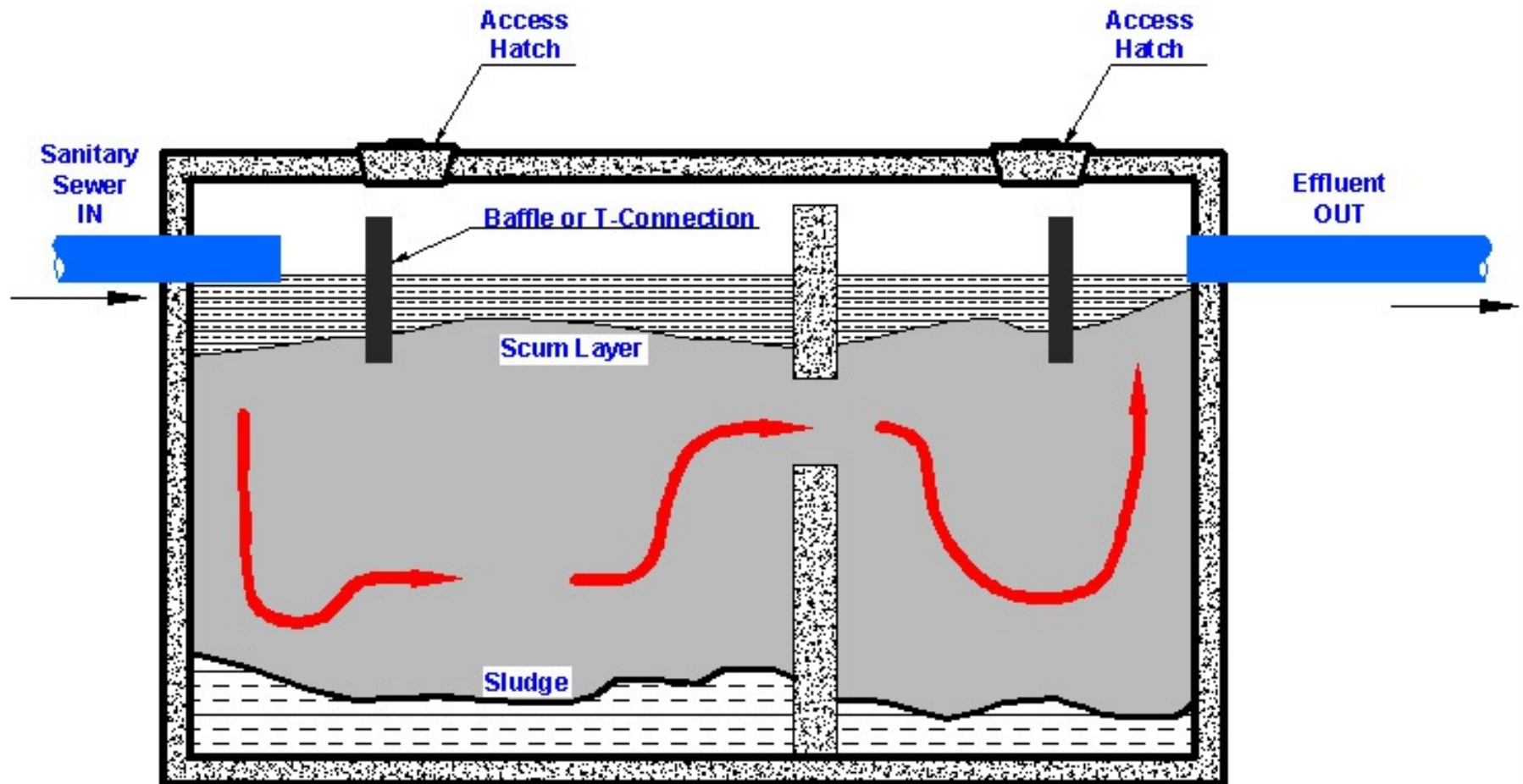


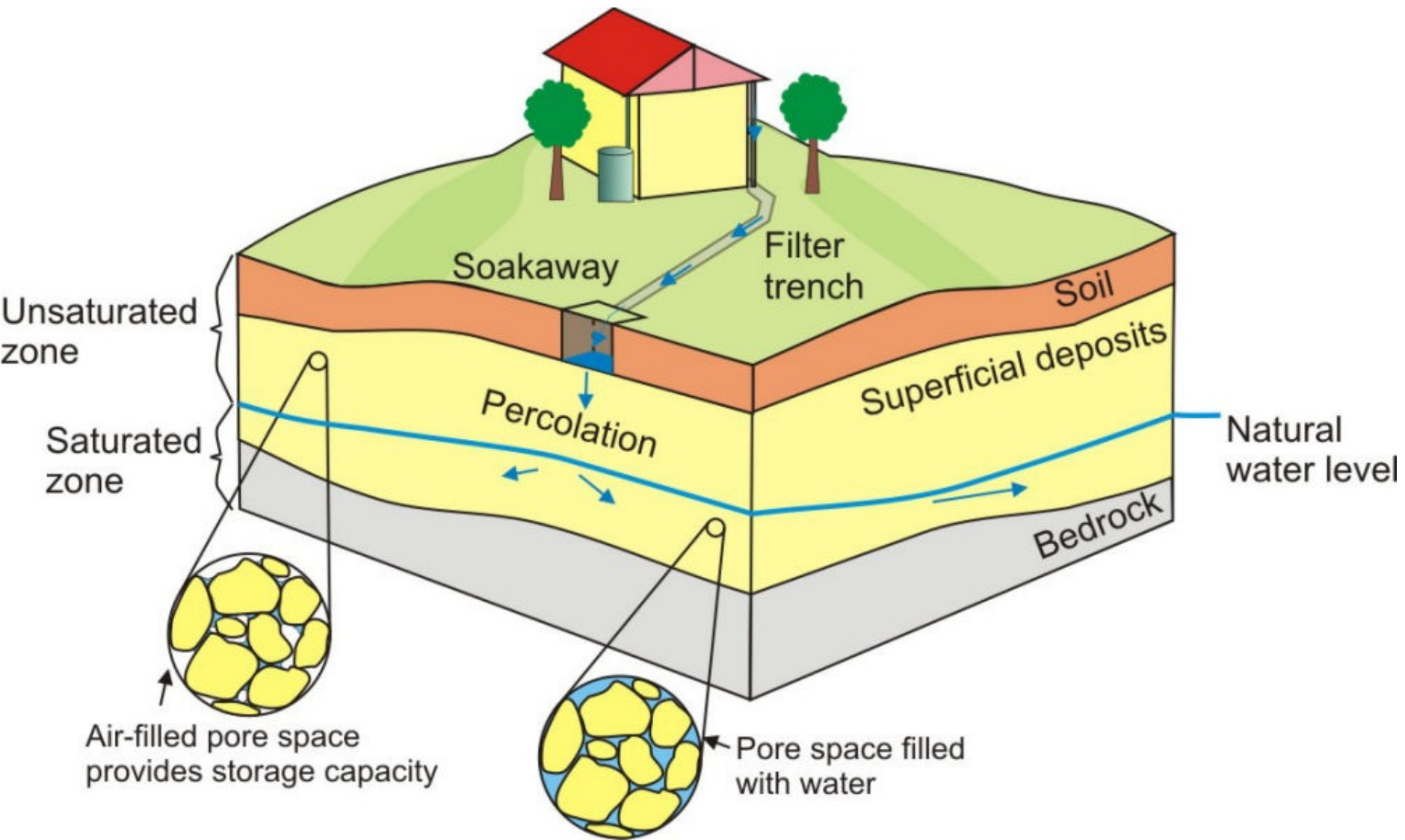


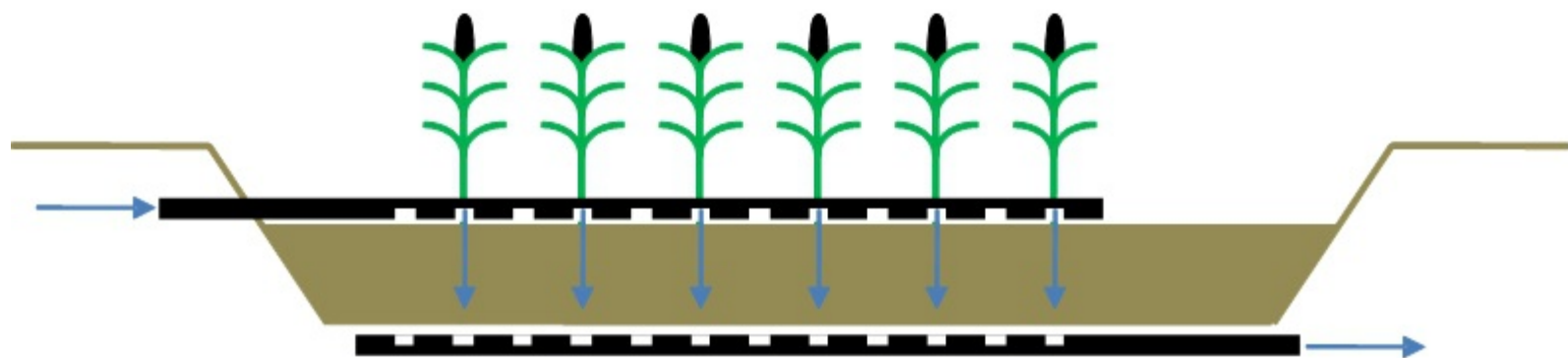
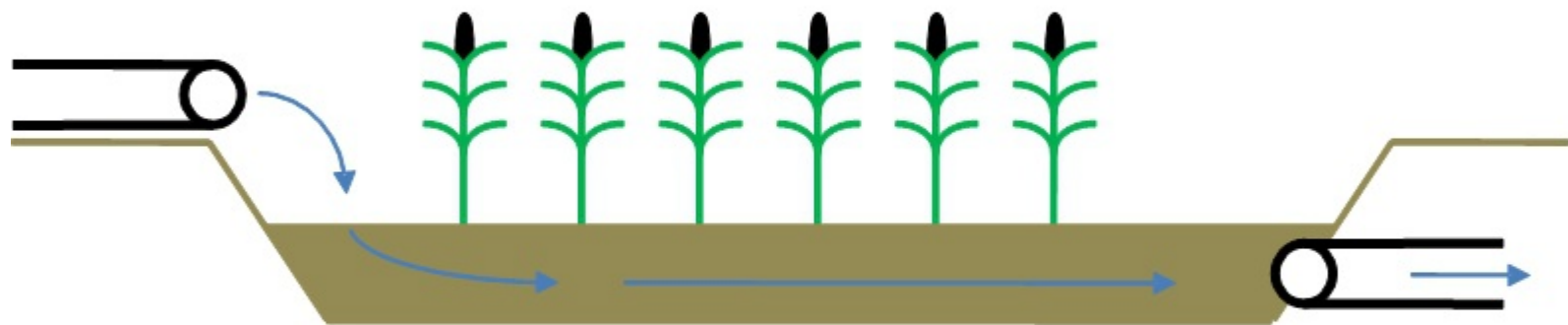
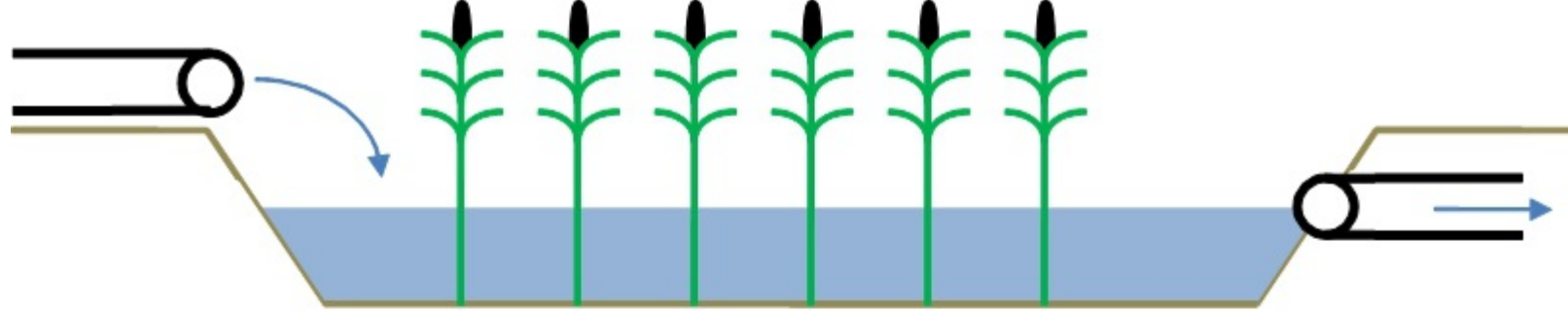
r treatment with nat
methods



TYPICAL SEPTIC TANK







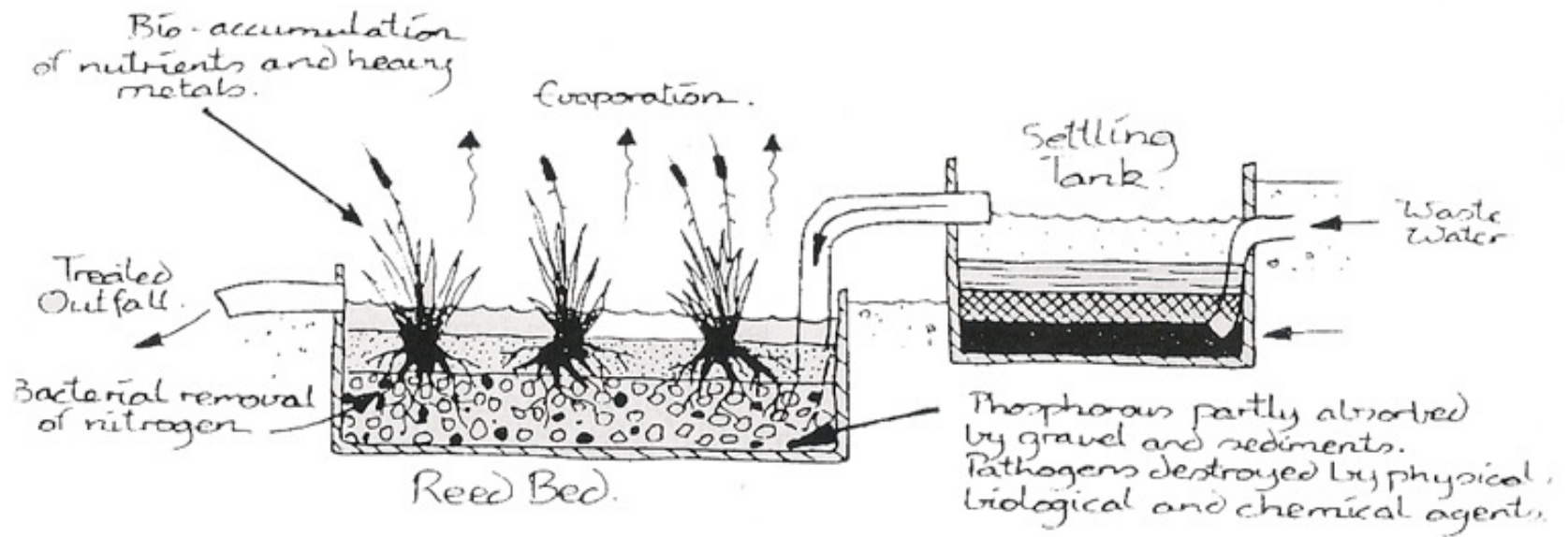


Figure 9.4 A typical reed bed system to treat and recycle your greywater.

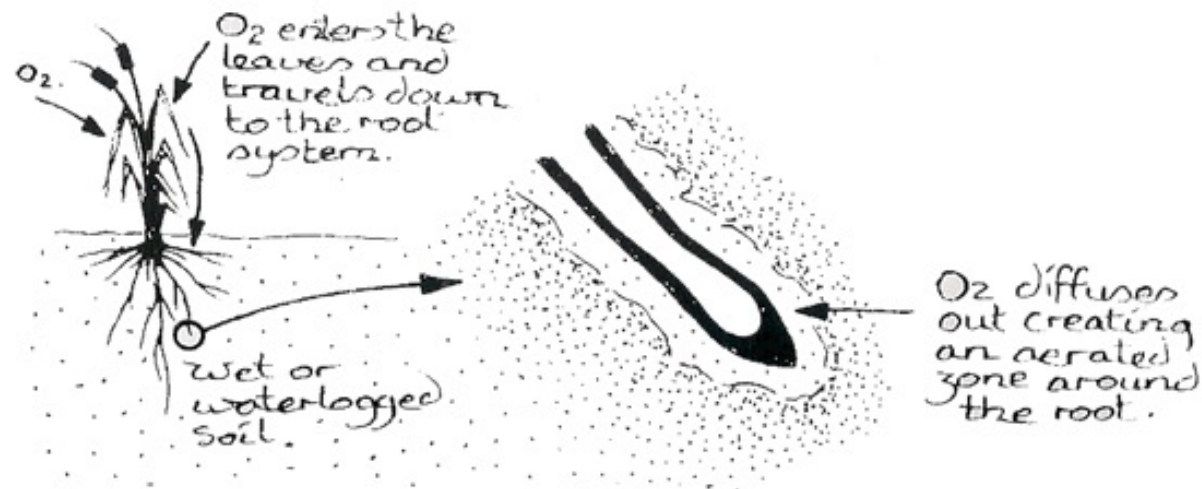
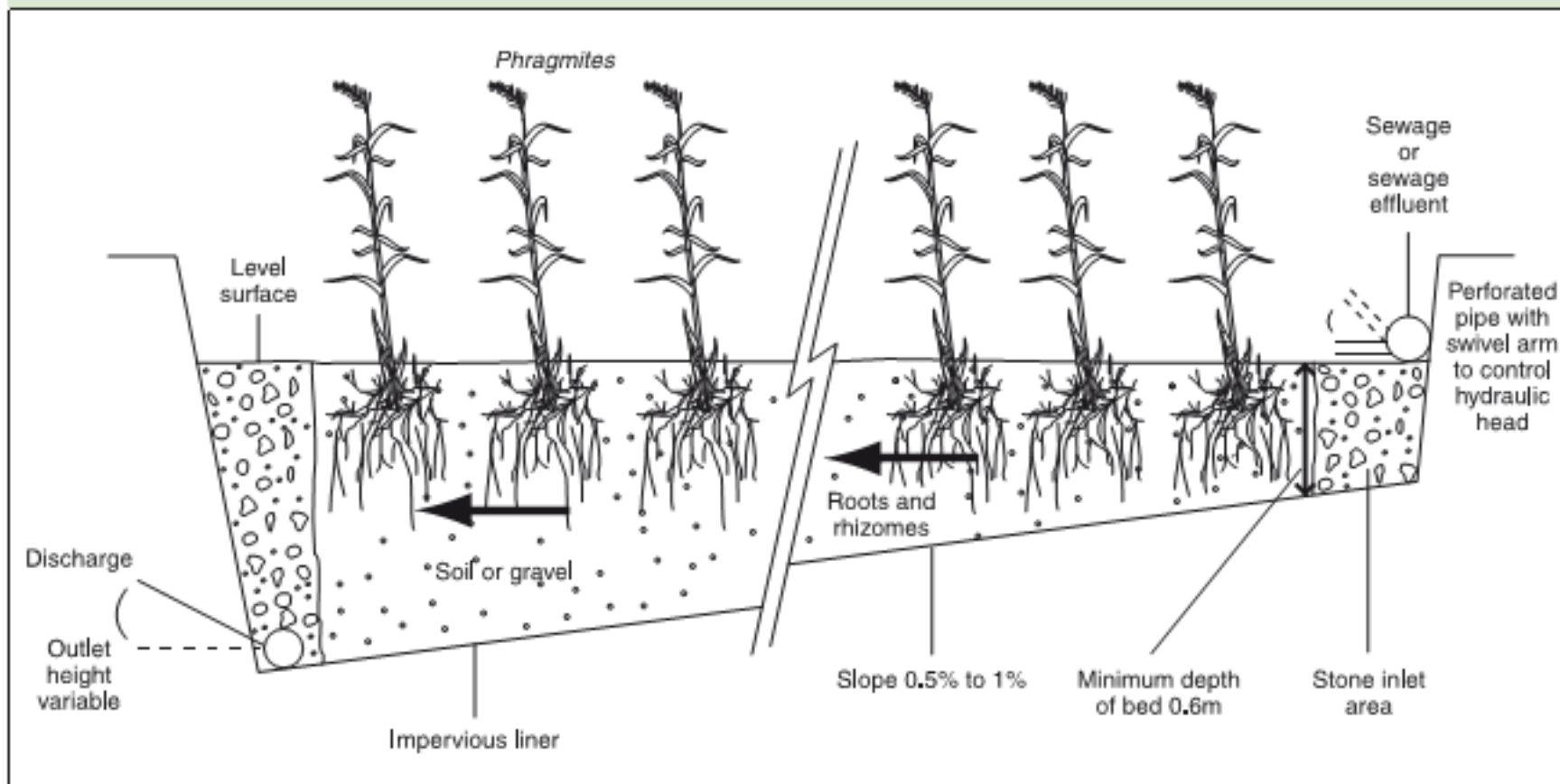
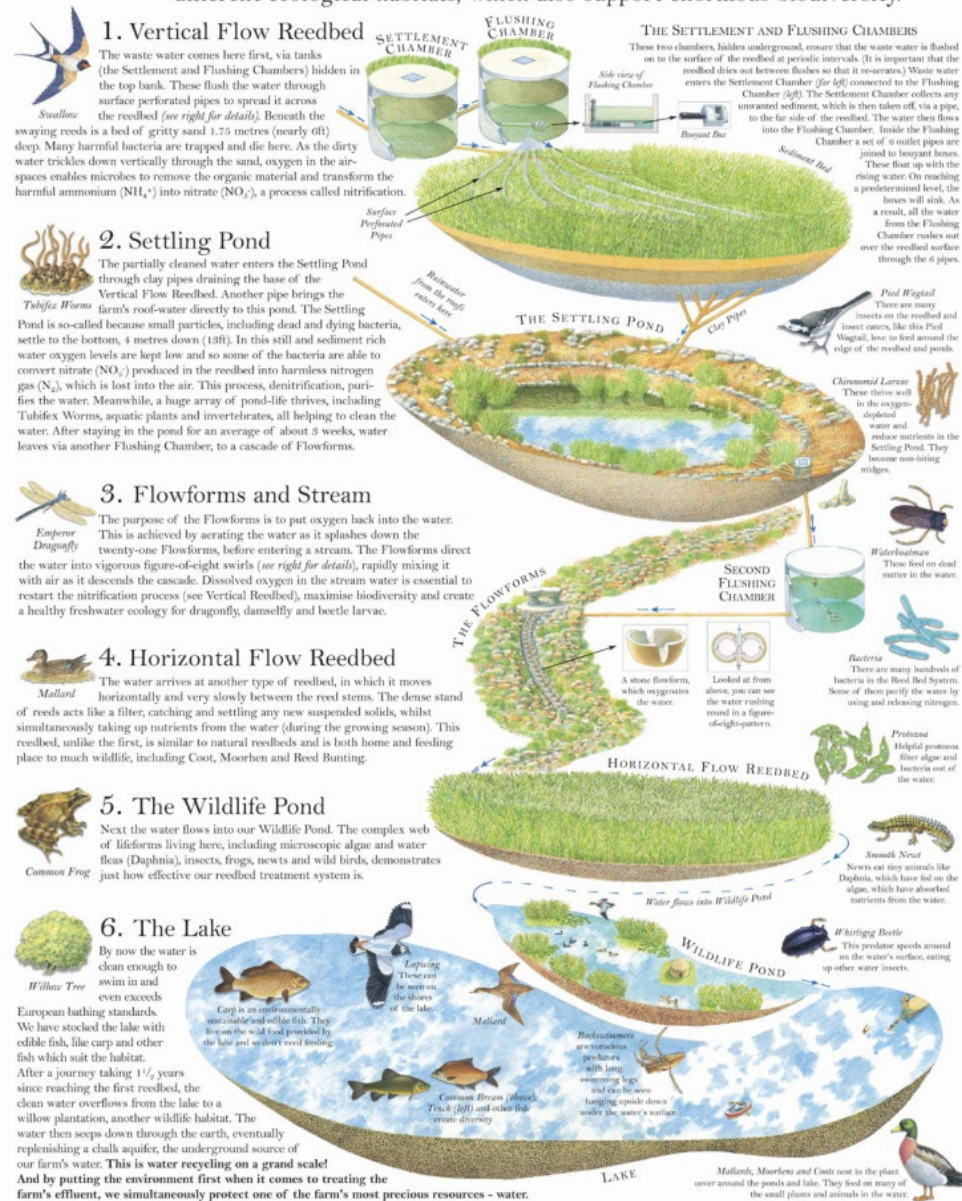


Diagram 3 Typical horizontal flow reed bed treatment system



The Reedbed System & How It Works

Our reedbed purification system treats all the waste water from the farm, chicken processing, the cottages and Eco Conference Centre. Using only natural processes to convert this waste water into clean water, the system needs no chemicals or power supply. Instead it relies entirely upon gravity to create a flow of water through a series of different ecological habitats, which also support enormous biodiversity.

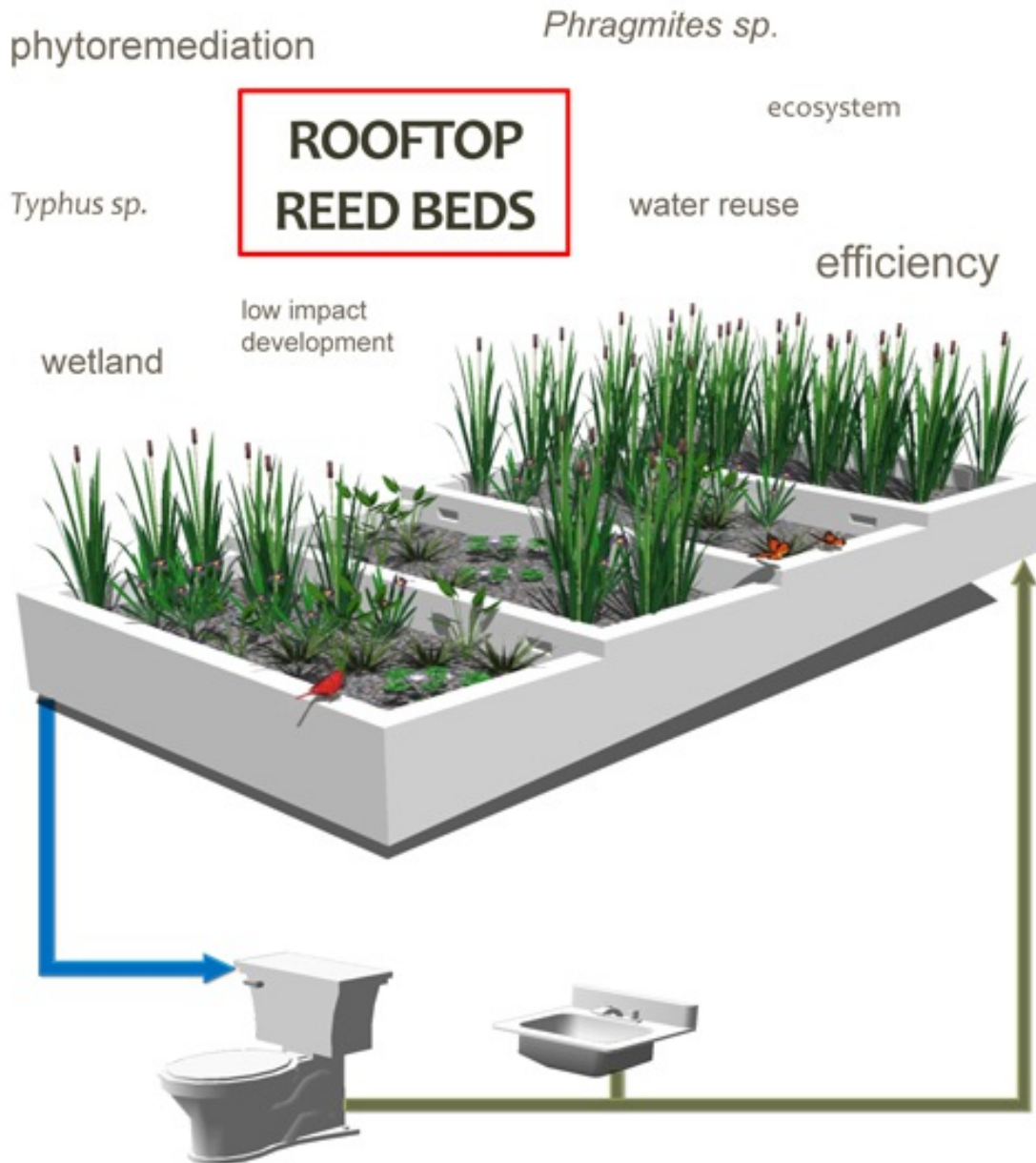


• Click









Subsurface-flow reed beds are a proven **low energy** technology for the bio-chemical treatment of wastewater.

Rooftop installation provides storm water retention capacity, **reducing urban flooding.**

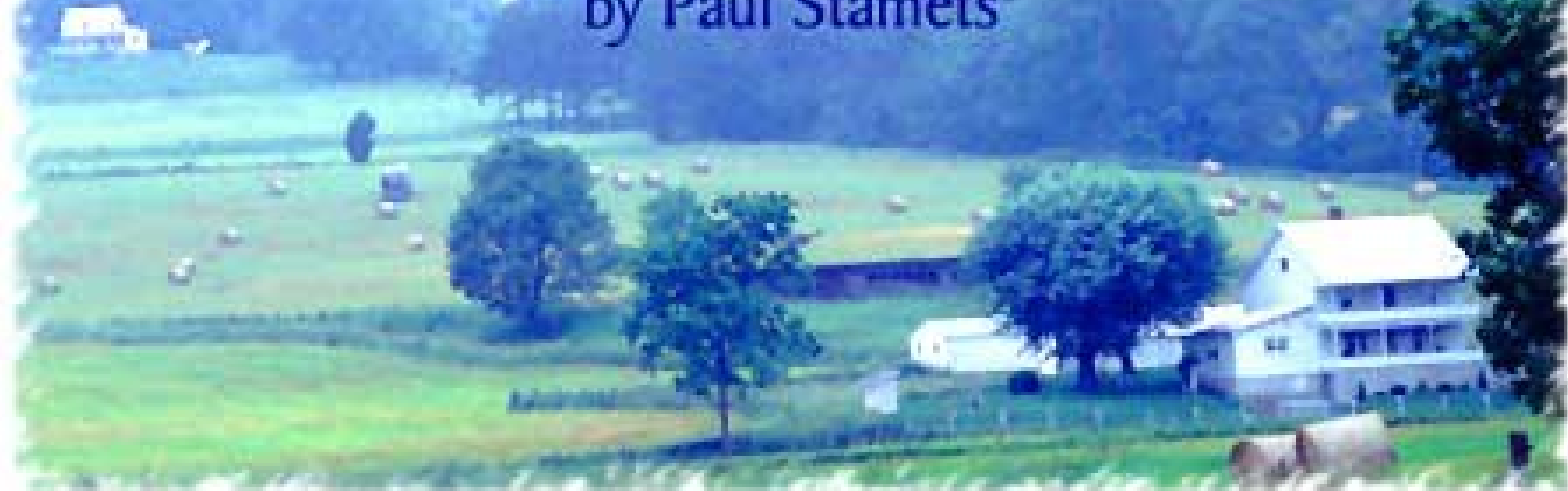
Evapotranspiration of the water, and the insulation effect of expanded aggregate provide thermal regulation within the building, **improving human comfort.**

A lack of exposed surface water, prevents mosquito larval growth, but the vegetation offers an alternative built habitat for **increasing local biodiversity.**

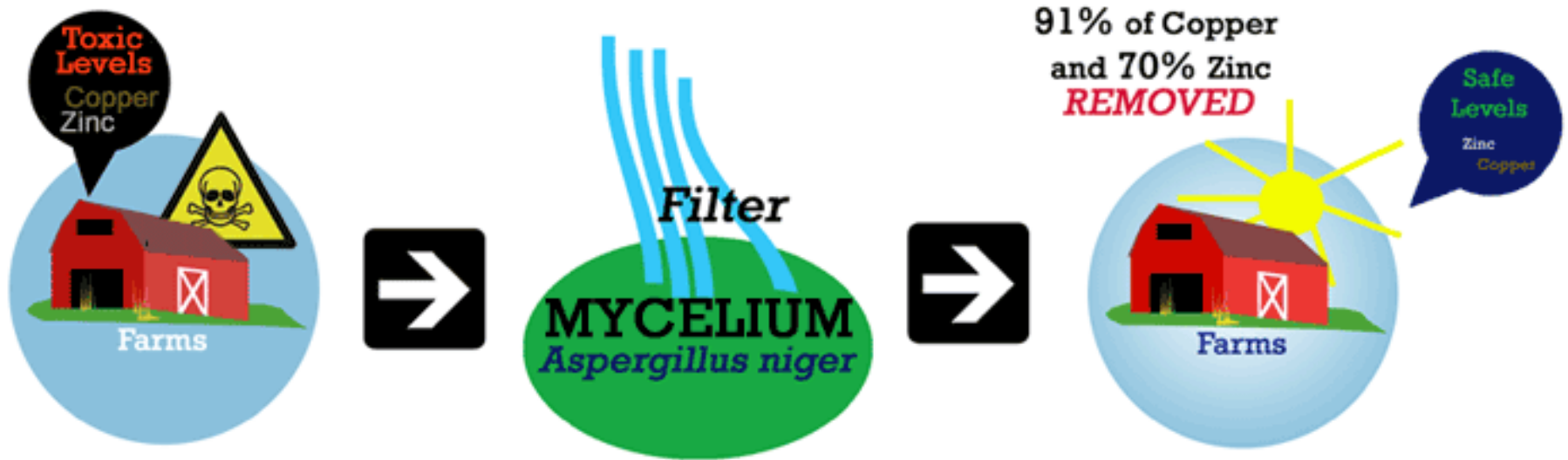
Needed: A Pollution Solution

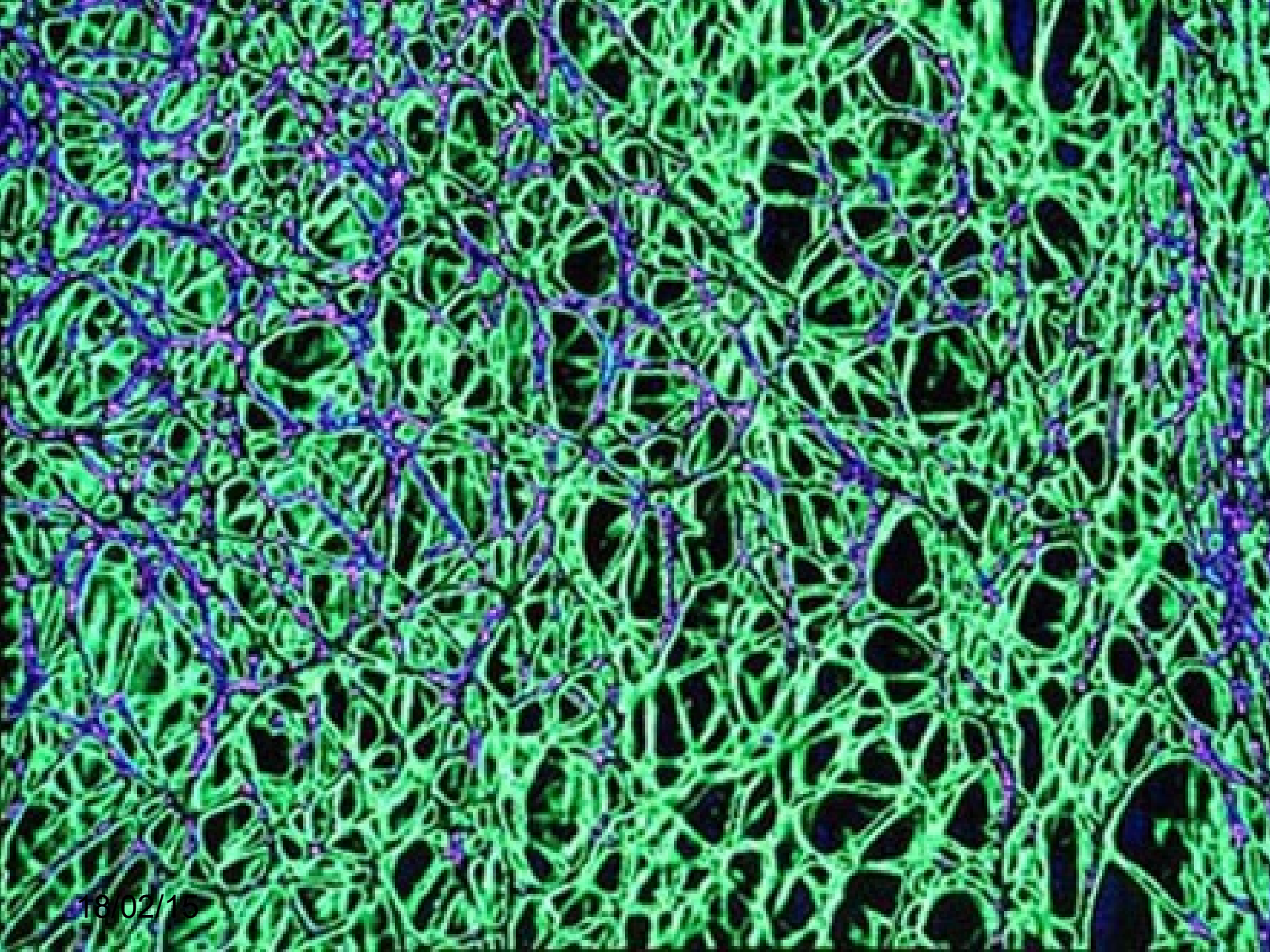
A NOVEL APPROACH TO FARM WASTE MANAGEMENT

by Paul Stamets



Micorfiltration





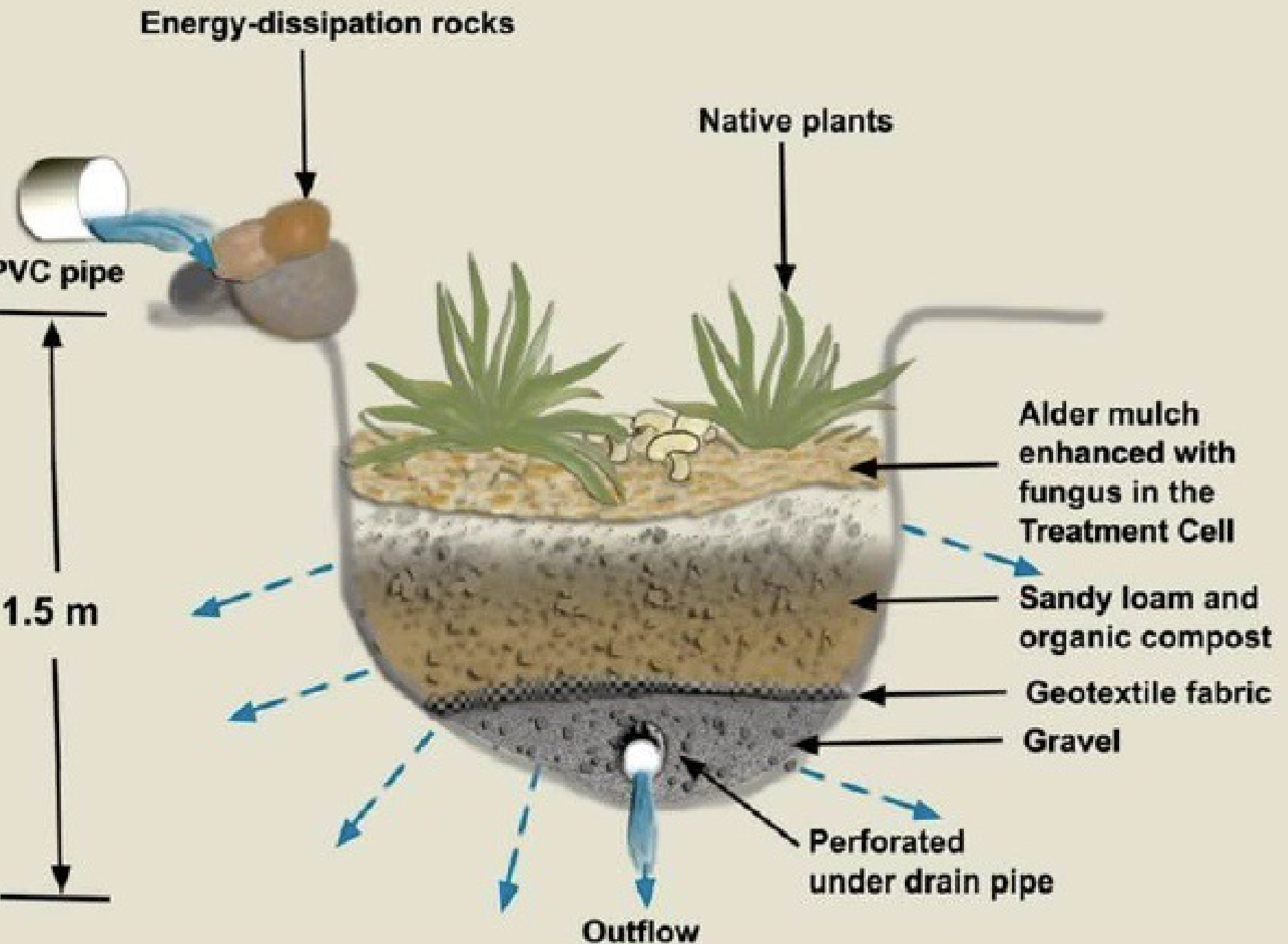
18/02/15



18/02/15

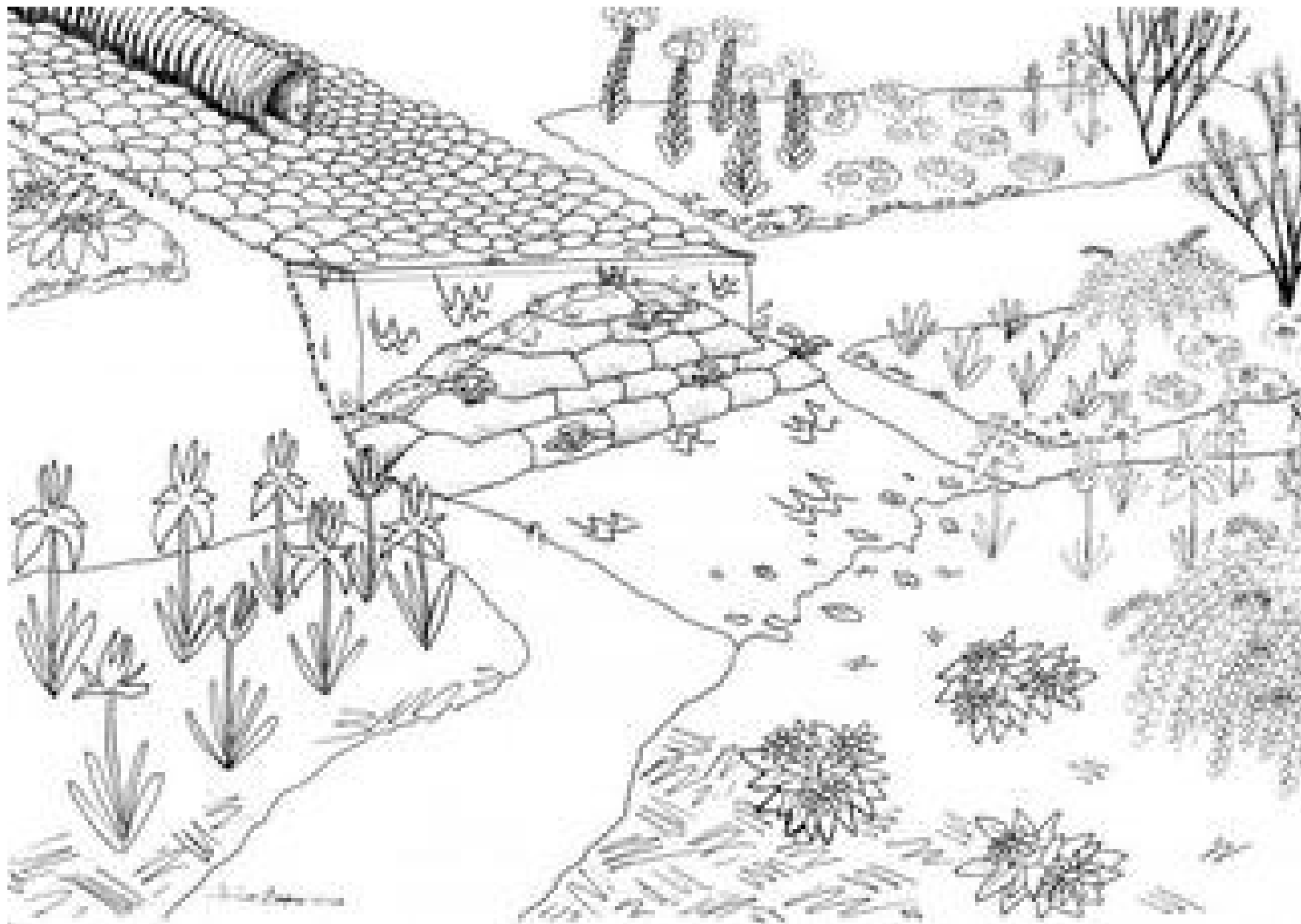


S



• C





18/02/15