



Get-Growing, Newtown
Community Market Gardens



FOOD WASTE!



**YOU can let
us compost
your food
waste...**

**or you can
send it to
landfill**



The decision is in your hands

If you'd like to compost your food waste and other
compostable items,

**PLEASE BE SURE IT GOES
IN THE CORRECT BIN.**



**CWM
HARRY
LAND TRUST**







Coleg Harlech WEA(N)
CAG(G) Coleg Harlech



START GARDENING



**The How
The when
The why
In fact all you need
to
Know to grow your
own veg**

**Starts TUESDAY
7TH SEPTEMBER 9.30-12 at**

**CWM Harry land trust
Vastre ind.estate
NEWTOWN**

For further information

Or to book a place

Contact Phil or Cecilia on 01686 610270

Or powys@fc.harlech.ac.uk

www.harlech.ac.uk

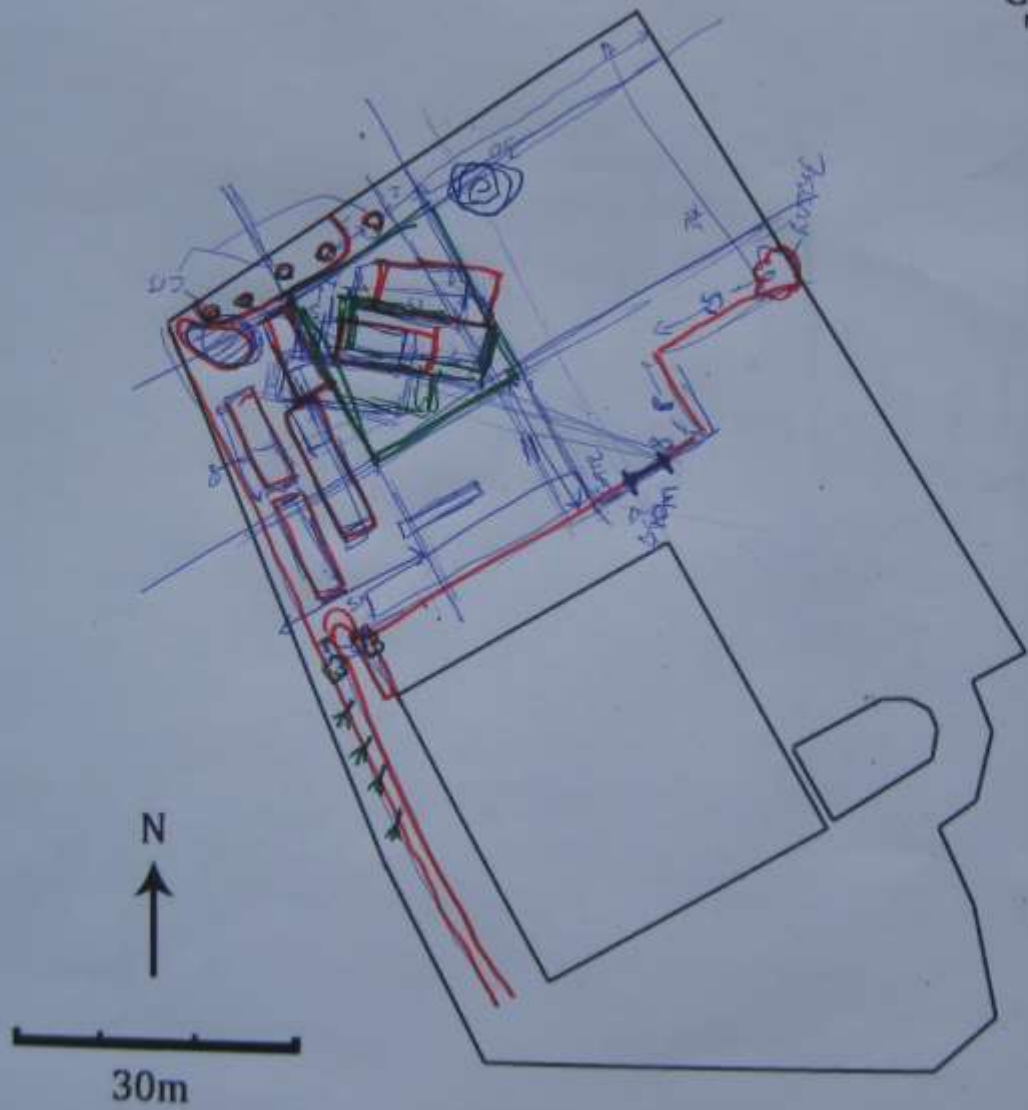
It's simple - to apply for an Individual Learning Account Wales (ILA Wales), all you have to do is contact learndirect by calling freephone 0800 100 900 and ask for an application form.

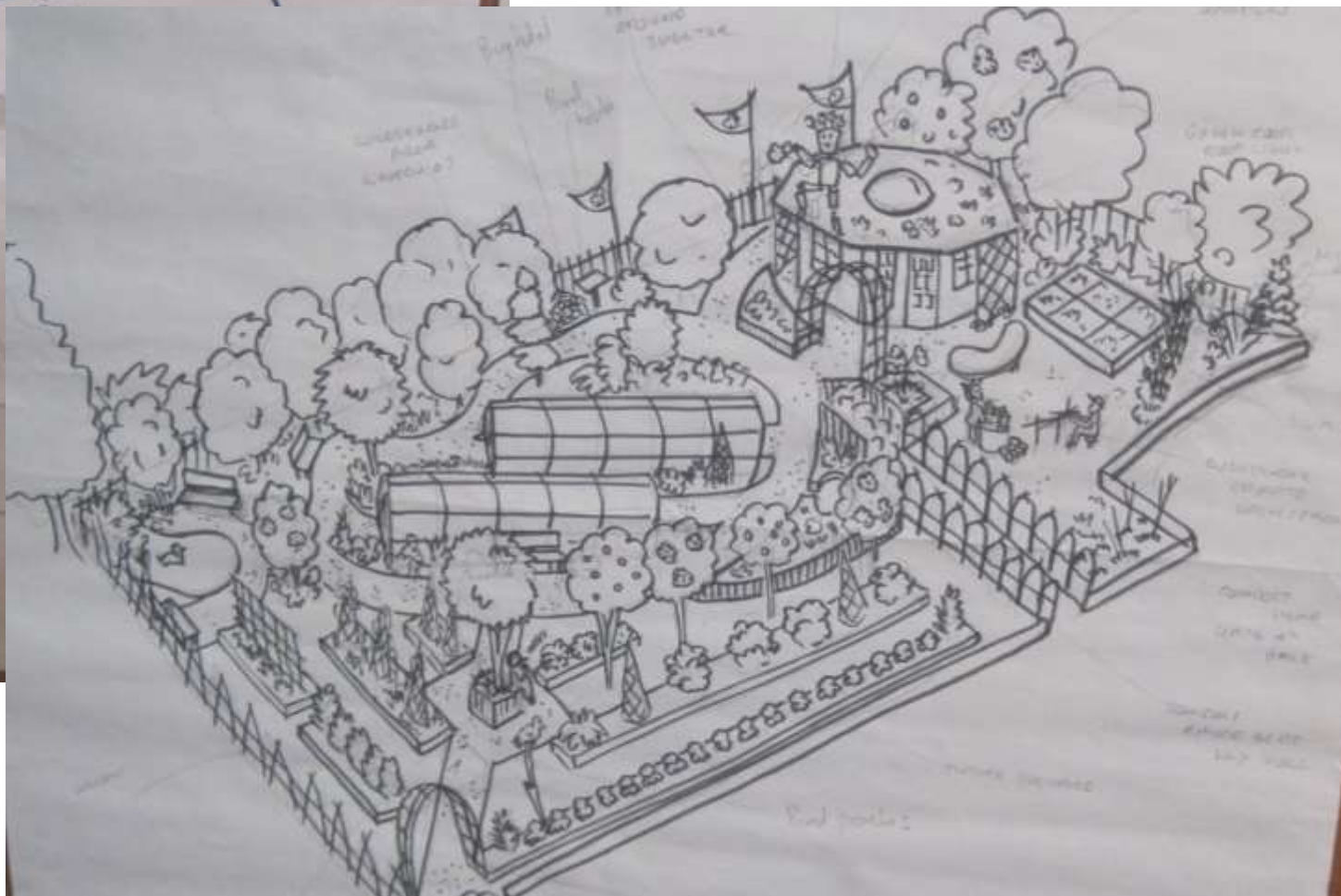






Cwm Harry
Newtown - Powys





Jun-Sep Oct-Apr Apr-Sep

EDUCATION

GROWING ORGANICALLY

STAGE 1

2

ONWARD

INTERCHANGEABLE

TALKS

FRIENDSHIPS

SHARING

CARING

SUPPORTING

FOREST GARDENING NURSERY MICRO GARDENS

HAZEL + WILLOW GROWING

COMPANION PLANTING

SEED + PLANT PROPAGATION

SHELTER BUILDING

COPPING

FOOD/PLANT PRODUCTION

Acyung

BUSHCRAFT

BASKETRY, WILLOW WEAVING

MASARONG GROWING

HERBAL MEDICINE

RENEWABLE ENERGIES

FOOD + NUTRITION

GREEN WOODWORKING

BEEKEEPING

COMPOSTING
RECYCLING

NATURE TRAILS

MICRO CLIMATES

SCULPTURES

FORAGING

SEED SHARING

PLANT IDENTIFICATION

WOODCARVING

FLOWERCRAFTS

PERMACULTURE INTROS.

CHARCOAL MAKING

WORMERY

BUG + BIRD BONES

HEALING THERAPIES

SOIL PROPERTIES

SOCIAL NETWORKING

COMMUNITY



WORKSHOPS, DEMONSTRATIONS + OPEN DAY SUGGESTIONS

| | WEEK 1 | WEEK 2 | WEEK 3 | WEEK 4 |
|--------|-----------------------------|--------------------------------------|----------------------------------|---|
| JUNE | VOLUNTEER DAY | PATHWAY CONSTRUCTION | PATHWAY CONSTRUCTION | SIGN MAKING + INSTALLING (INCLUDING PERMACULTURE TRAIL) |
| JULY | SHELTER WALLS CONSTRUCTION | LIVING ROOF CONSTRUCTION + PLANTING | OPEN DAY | |
| AUGUST | TREE PLANTING + TRANSFERING | HERB WORKSHOP + BUILDING HERB SPIRAL | | MUSHROOM LOGS |
| SEPT. | BIRD BOX BUILDING WORKSHOP | | WINTER SALAD CROP IN POLY TUNNEL | SEED COLLECTION + SWAP HARVEST DAY |



Cwm Harry Back Field Garden Plot

7 Jan 2011 - v8 - Ian/Sector39



un
Calendula















































































Local Food & Growing in Newtown



Sat 25 February
10am – 3pm



On the High Street, next to Market Hall

- 🌱 Seed swap & FREE seed starter packs
- 🌱 Growing advice for all
- 🌱 FREE micro allotments – find out more!
- 🌱 Cwm Harry Food Co veg box scheme
- 🌱 Visit our In Vessel Composting plant and community garden on the Vastre Industrial Estate and bag some
- 🌱 FREE soil improver made from food waste. Bring your own strong bag!



French bags
Dutch-Kiste

River Bags

River Bags

River Bags

River bags

River bags

River Bags

River

Good Bags
10/14

Good Bags
10/14

Good Bags

5

10/14



PILGRIM

INFORMATION
SHEETS

Cwm Harry
Food Co.

Tyfu Pobl
Growing People

Table with brochures and informational materials.





Get-Growing



Cwm Harry
Local Growing



www.get-growing.org.uk







© 2012 Google
Image © 2012 Getmapping plc







Community Garden Design

A 5-day intensive course, at Coleg Powys,
Newtown, for all community growers.

Led by Emma Maxwell and Steven Jones.

£140.00 - booking now, July 16th-20th

Bursary's available for local participants

get-growing.org.uk

Learn the basics of garden design, horticulture,
permaculture and group work to produce a real
design for implementation

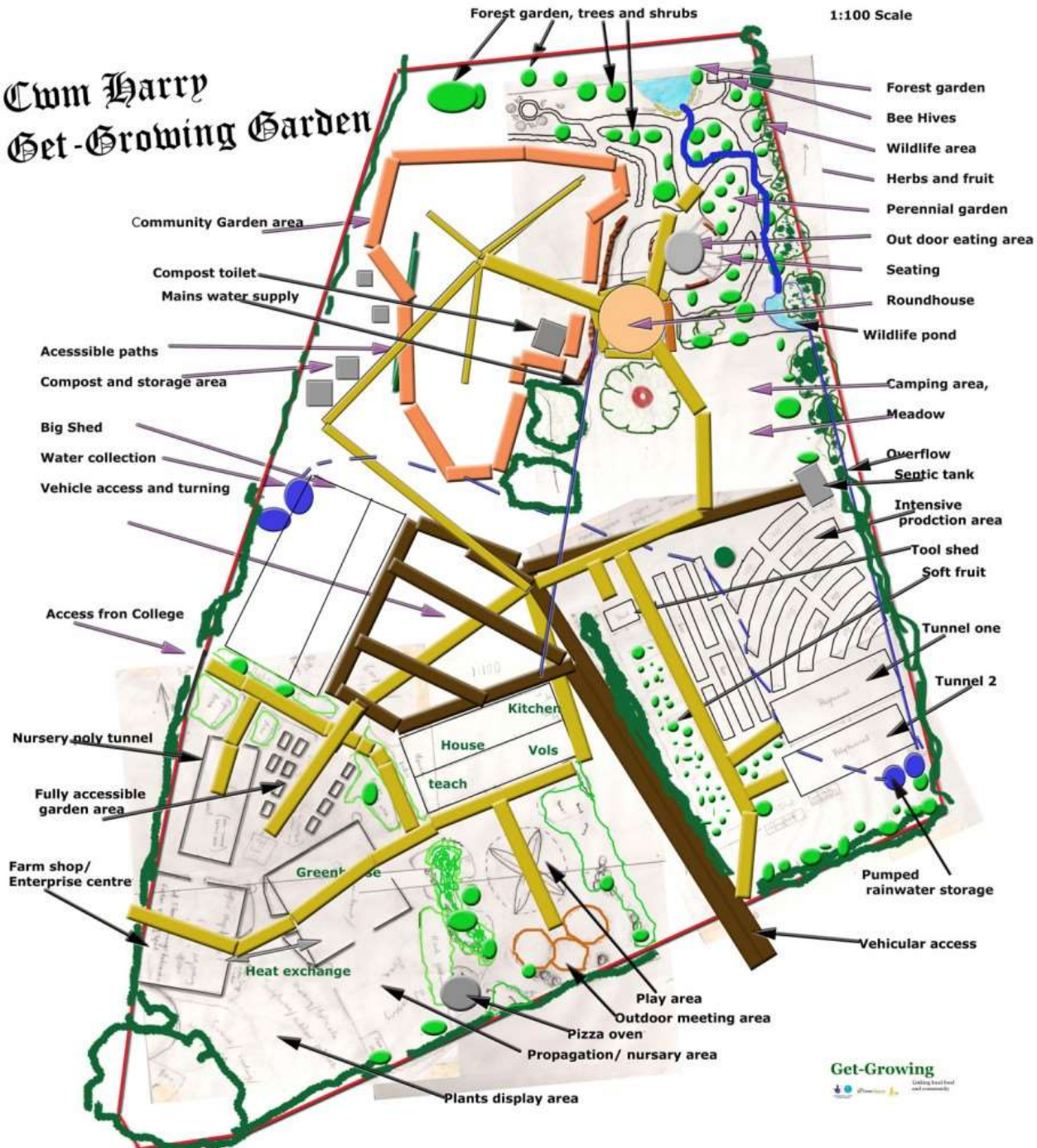






Cwm Harry Get-Growing Garden

1:100 Scale





it has most definitely helped me get to where I am now. I have recently been awarded a

Powys has to be the opportunity I was given to go abroad to do a placement through a

pleased for her and it just shows what a little hard work can achieve."

If you would like to be part of the next series of events please contact Mandy on 01588 630683 or e-mail mandy@rightfoot.org.uk



Get Growing plan takes root

THE Get-Growing Project planted a symbolic Black Mulberry Tree in the main garden and teaching space at the project's base at Pen Dinas in Newtown, based on the Coleg Powys' Newtown campus. The project is aimed at developing a community market garden, with wildlife and play areas. Planting the tree at the project's open day on Wednesday, November 14, are, from left, Lee Davies (estate manager), Edward Gwillim (director of finance and corporate service at Coleg Powys), Adam Kennerley (Cwm Harry chief executive) and County Councillor Graham Brown.

Picture: Rob Davies
RD341_2012-1

Send us your news

- Email – news@countytimes.co.uk
- Visit – www.countytimes.co.uk
- Write to – 11c Broad Street, Welshpool, Powys, SY21 7LE

for is DOMINIC ROBERTSON. Contact 01938 553354 or email dominic.robertson@countytimes.co.uk



















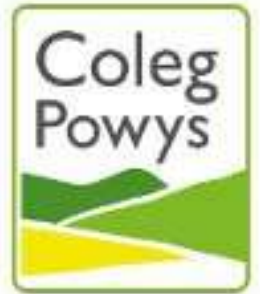








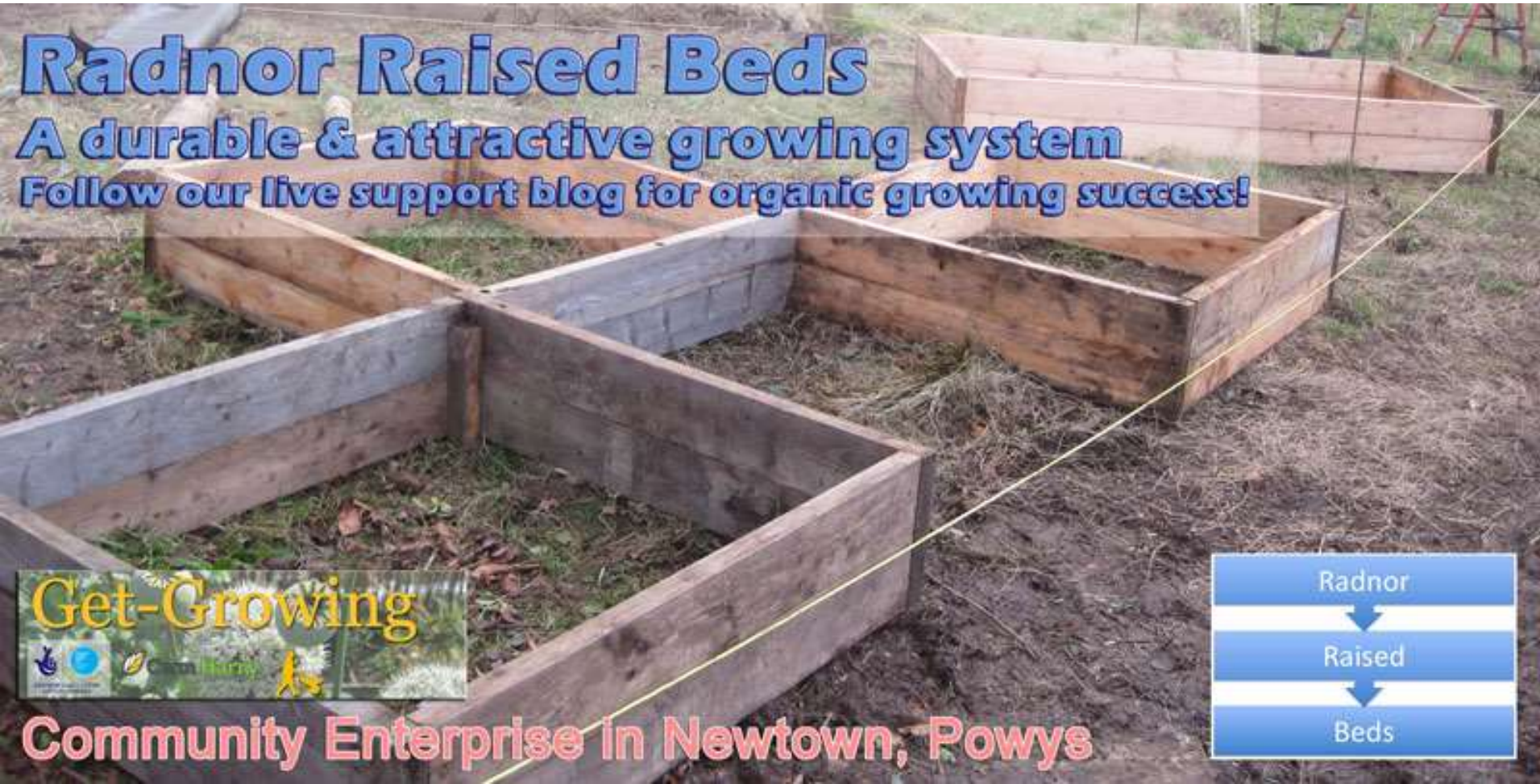




Radnor Raised Beds

A durable & attractive growing system

Follow our live support blog for organic growing success!



Community Enterprise in Newtown, Powys









Get-Growing

linking local food and community

Greenwood carpentry

A one day course

£35- £20 April 6th

Discount for low income/ Students

For gardeners and hobbyists

- . Learn basic hand tool use
- . Make garden furniture
- . Make & keep stool & bench
- . Lively practical session

With Ritchie Stephenson

Full course list and updates plus regular blog posts

www.get-growing.org.uk

**At Pen Dinas, Llanidloes Road,
Newtown, SY16 1HX**









Get involved

- Courses... from one day to 20 weeks
- Training for project workers and volunteers
- Project design and development
- Networking events
- Conference
- Regular volunteering days
- Seed and seedling swaps and much more!

Get-Growing.org.uk

- Steven Jones
- @misterjones2u 
- Sector39.co.uk
- Radnor-raised-beds
- stevej@cwmharry.org.uk
- 0771 981 8959



Thank you very much for listening.
Diolch i bawb yn fawr iawn

