

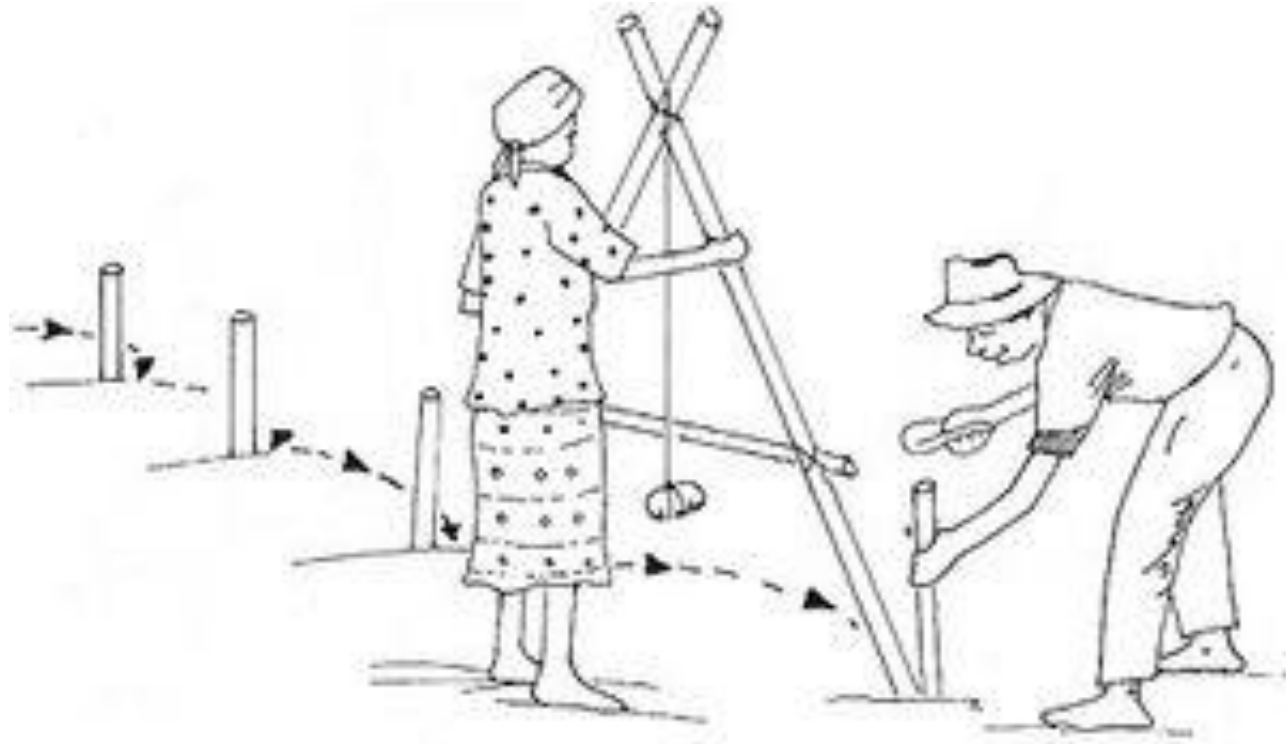
Small and slow solutions

Soil building strategies

Team building and information sharing

- ▶ Permaculture introduction
- ▶ Principles
- ▶ Patterns
- ▶ Ethics



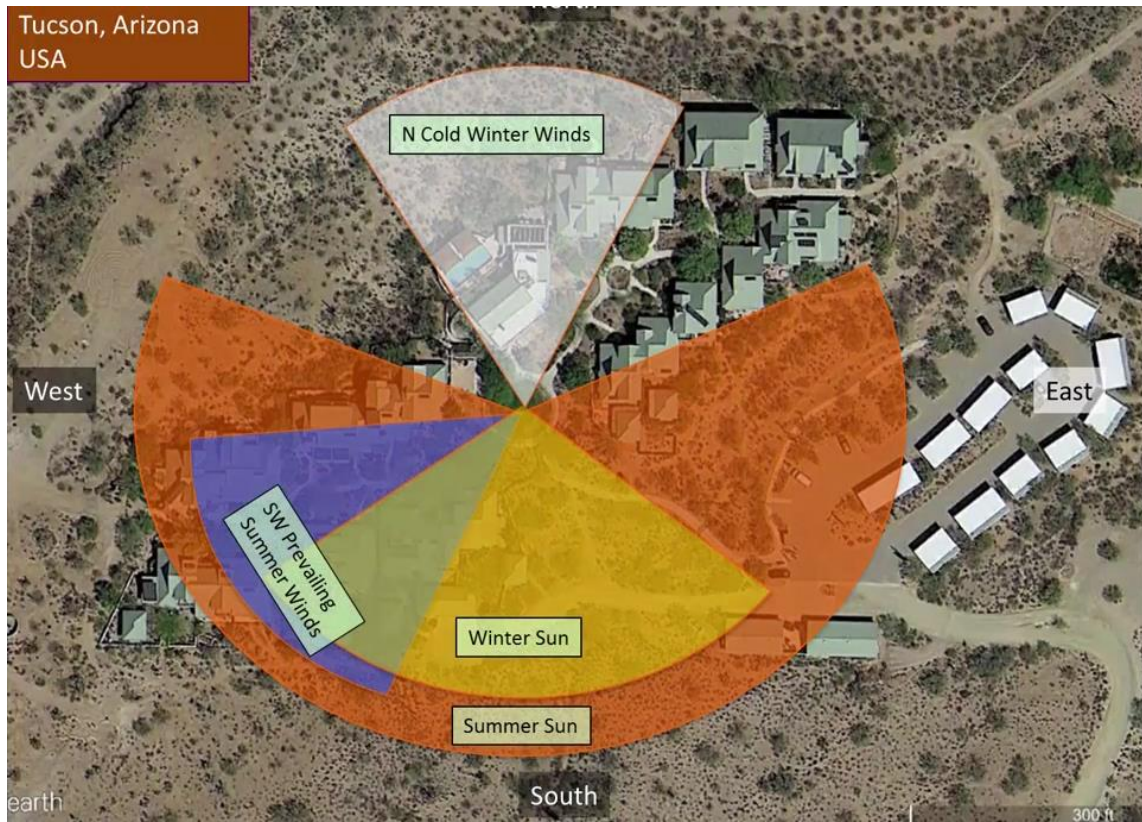


Survey

Plans and designs



Sectors



- ▶ Sun exposure
- ▶ Wind
- ▶ Fire
- ▶ Wild animals
- ▶ Access
- ▶ Slope
- ▶ Water
- ▶ fertility

Dedicated seed beds





Garden design



Raised bed systems





SUE'S
SEED SAVING
PLOT

Raised bed system



- ▶ kyaka 2 refugee settlement



Sack garden





Companion planting

Plant guilds





Seed collecting and saving

Nitrogen fixing trees and shrubs



Living fences, calliandra





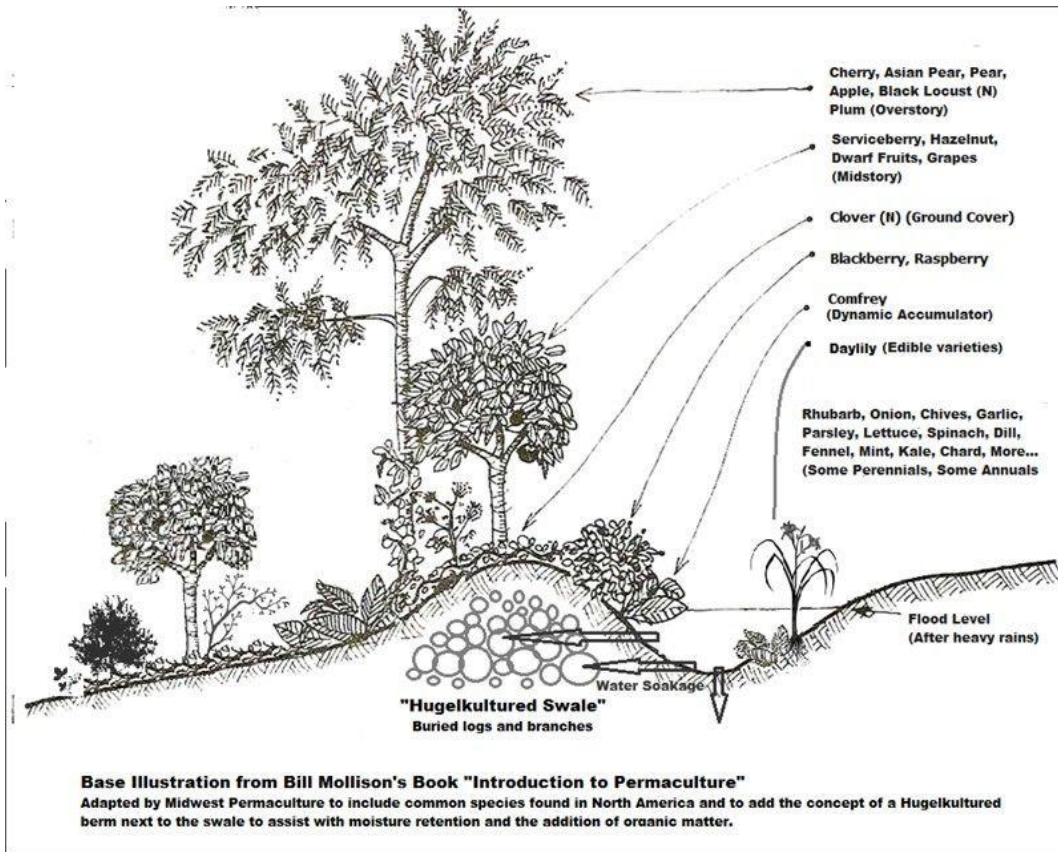


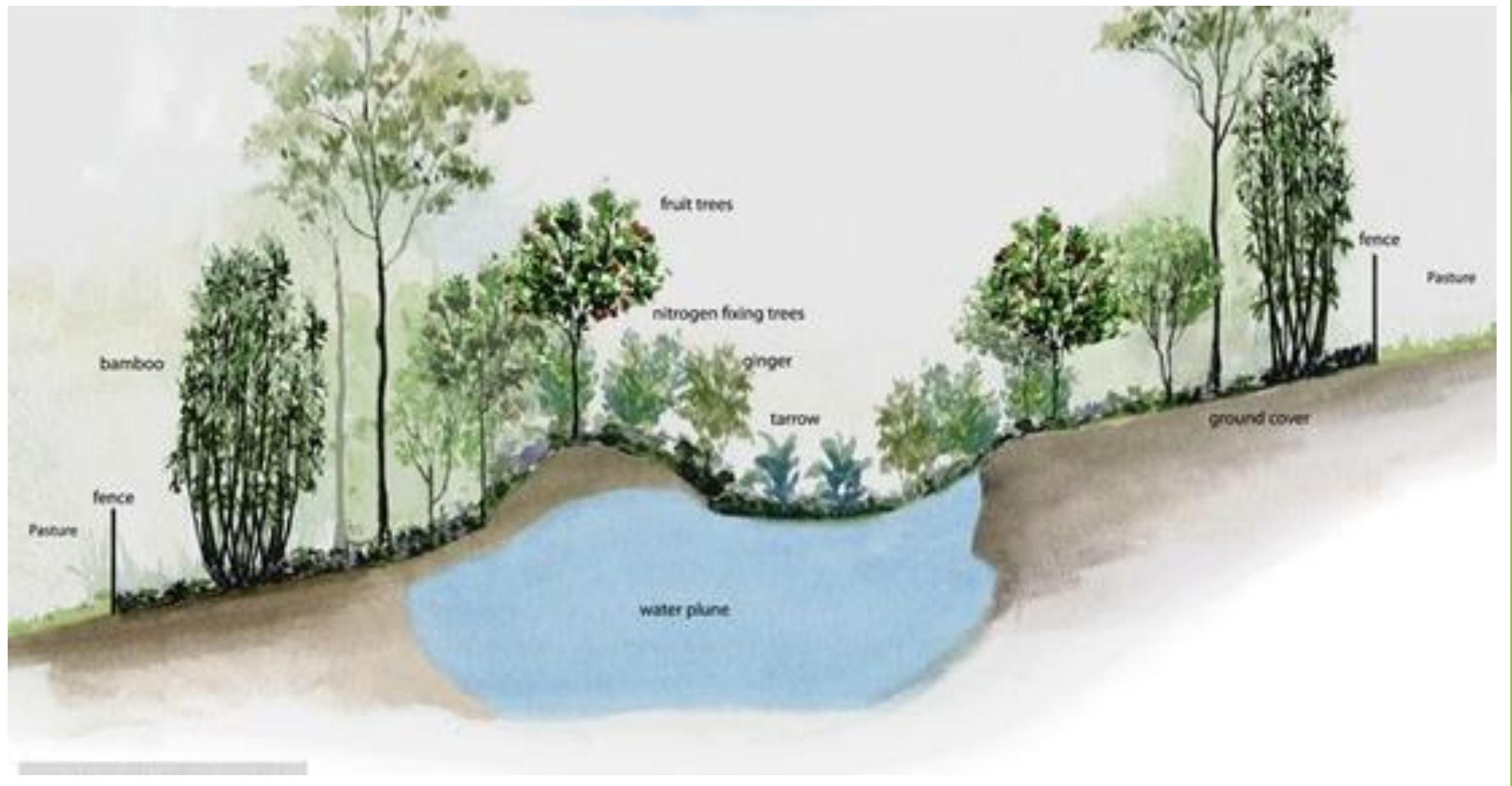
Plants with multiple uses

Moringa Oleifera

Swale systems

- ▶ Trap and hold as much water as you can
- ▶ Slow it down and soak it into the soil





Embrace Biodiversity





Vetiver hedges

Underplanting

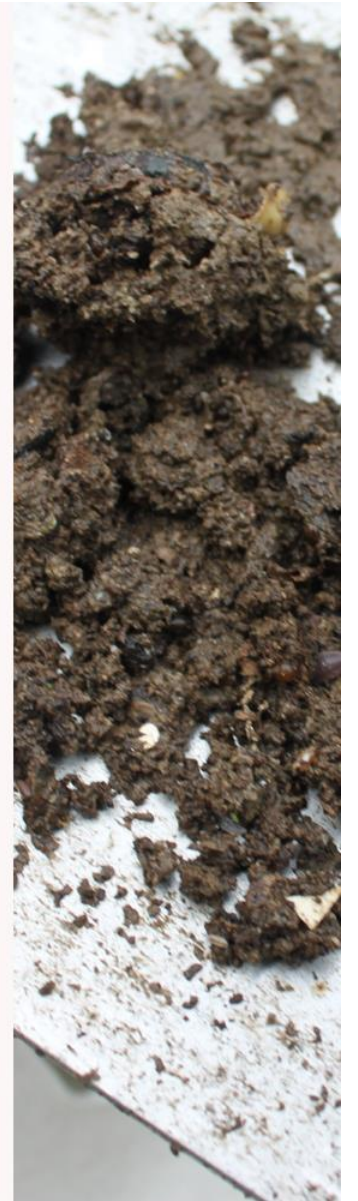
- ▶ Climbers and vines
- ▶ Diversification

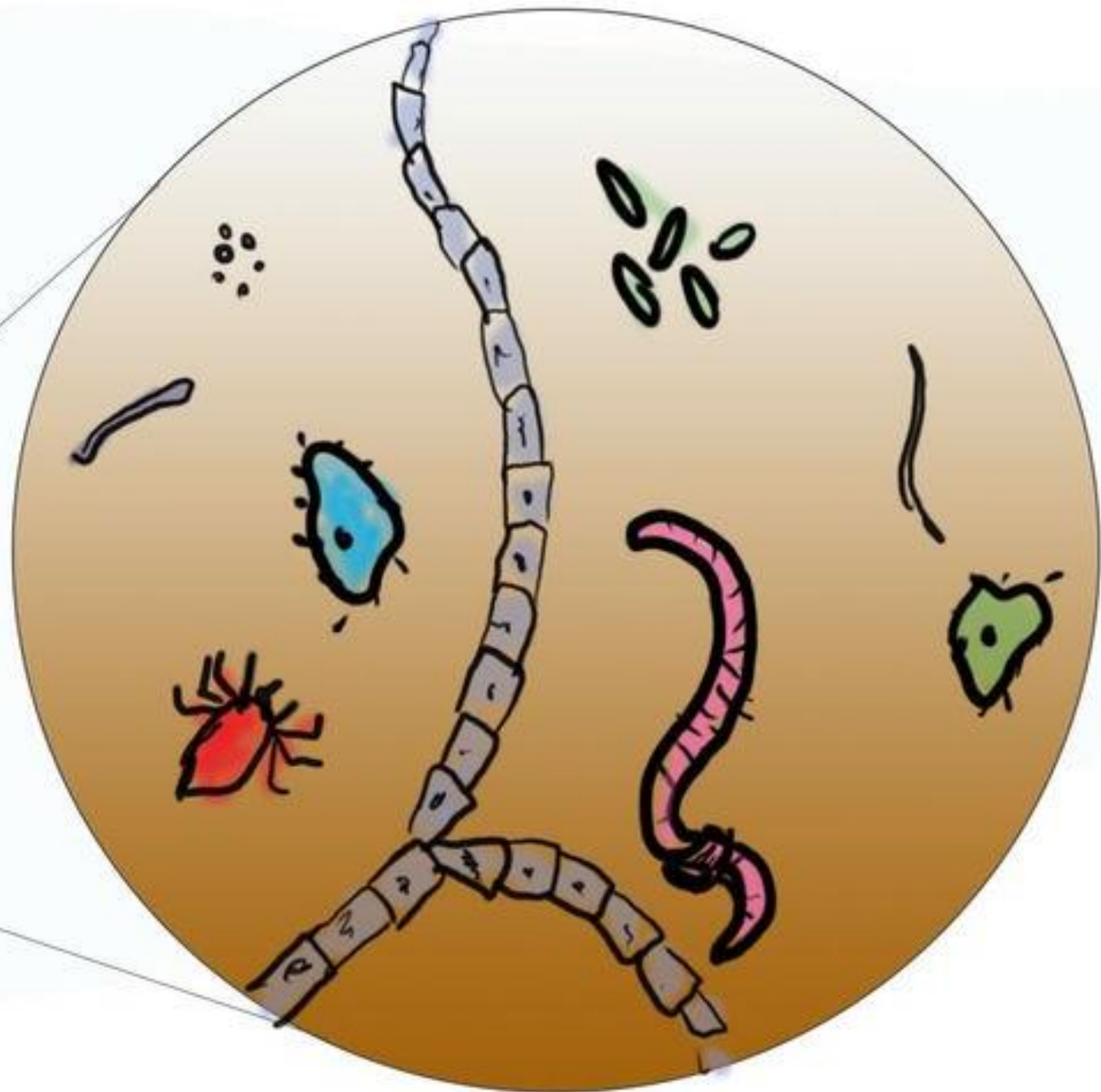
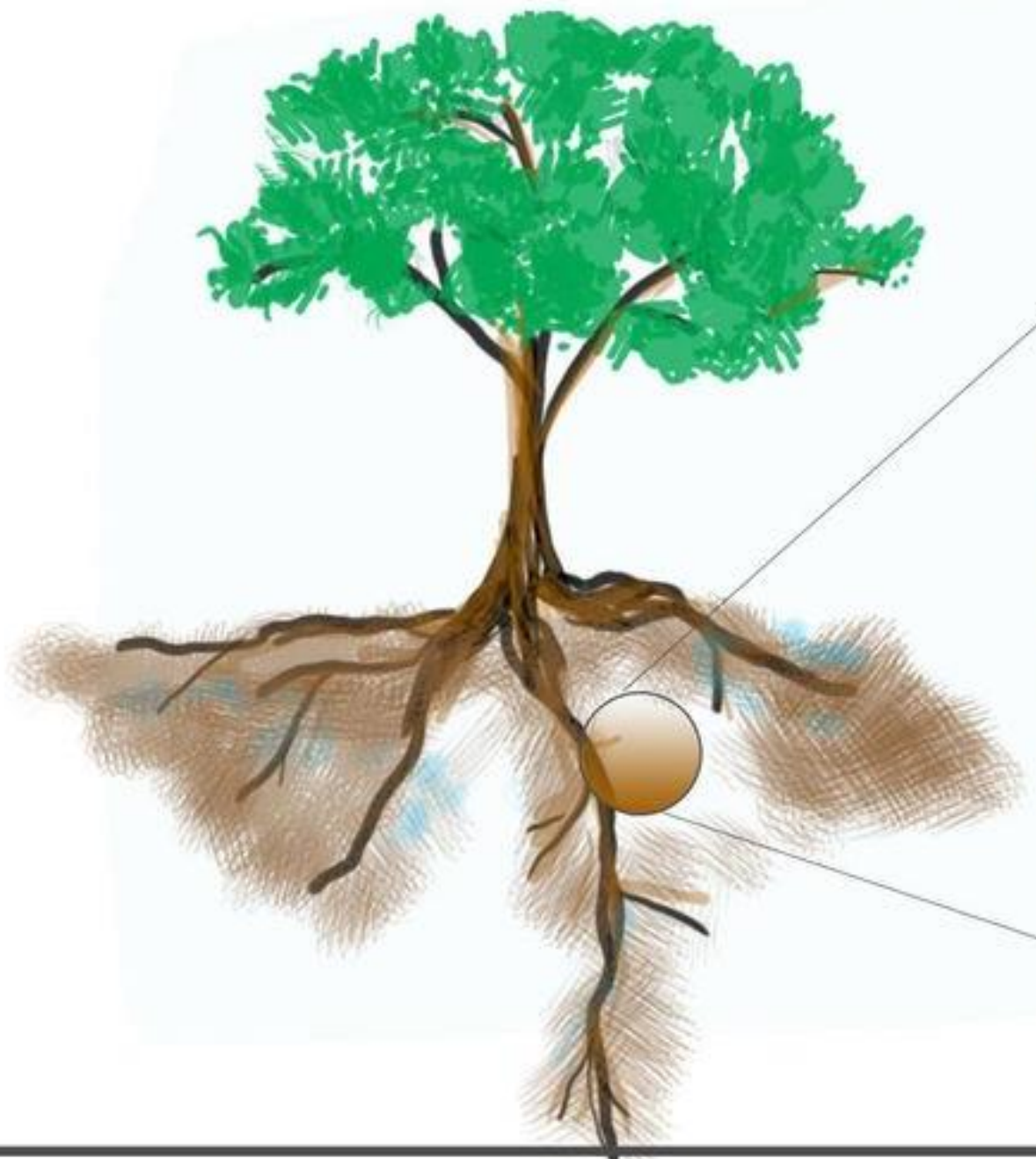




Compost



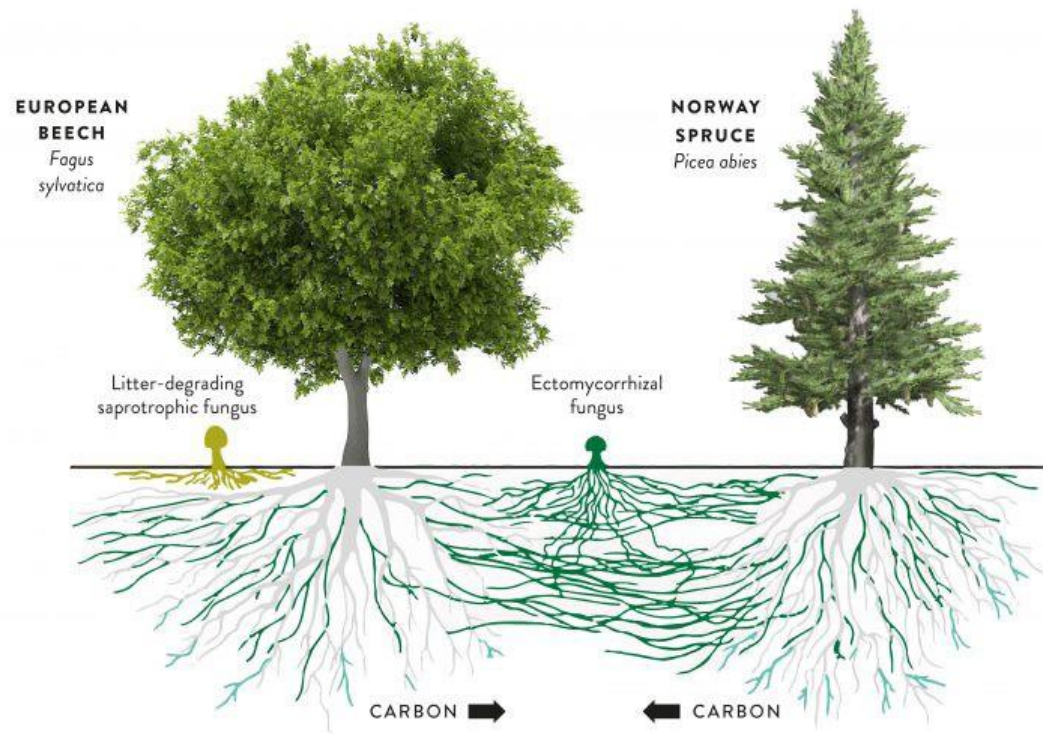






Biochar

Mycorrhizal fungi



Syntropic Agroforestry





Systems thinking

- ▶ Guilds and ecosystems
- ▶ Value each component in terms of function

Guilds

- ▶ Stacking of yields
- ▶ In space and time
- ▶ Inter cropping
- ▶ IPM
- ▶ Integrated design
- ▶ Supporting many key functions

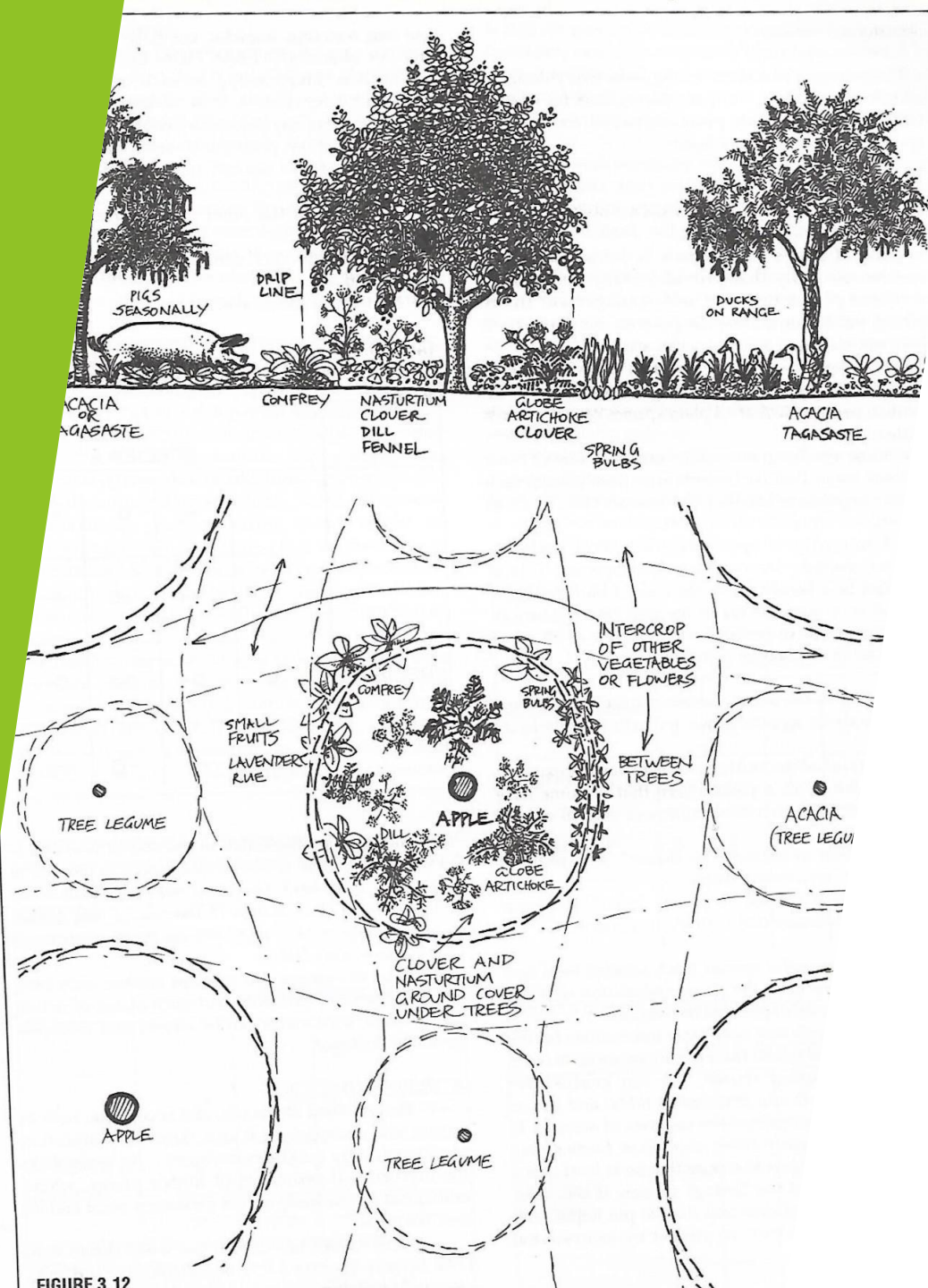
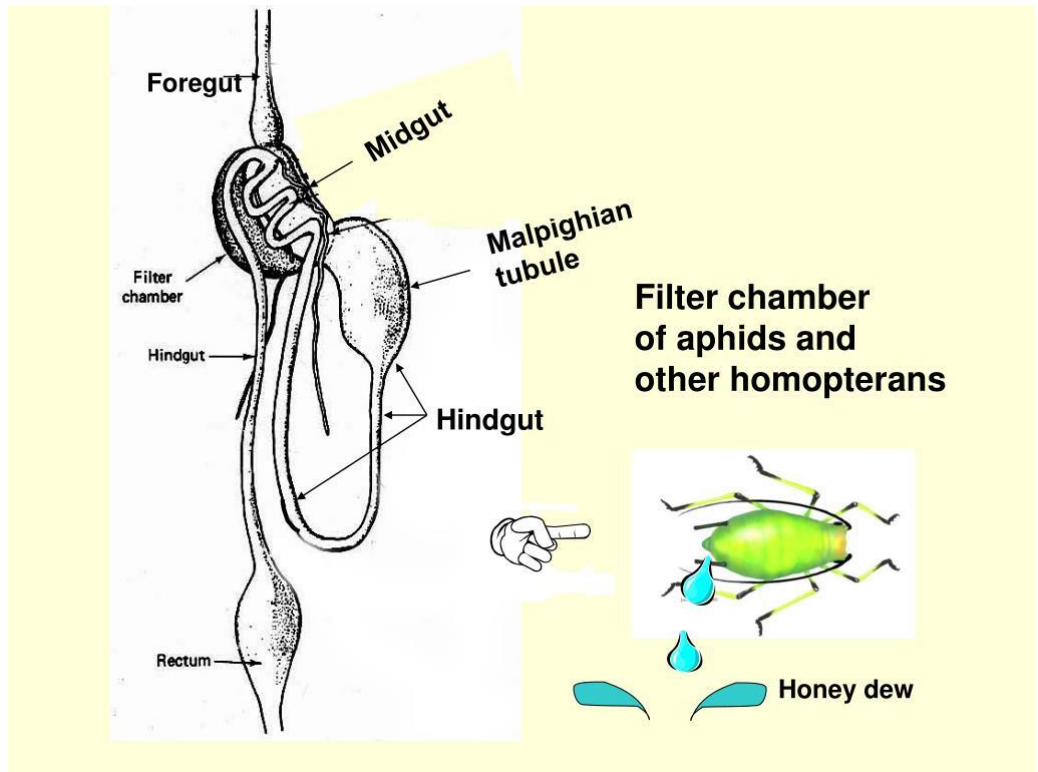


FIGURE 3.12

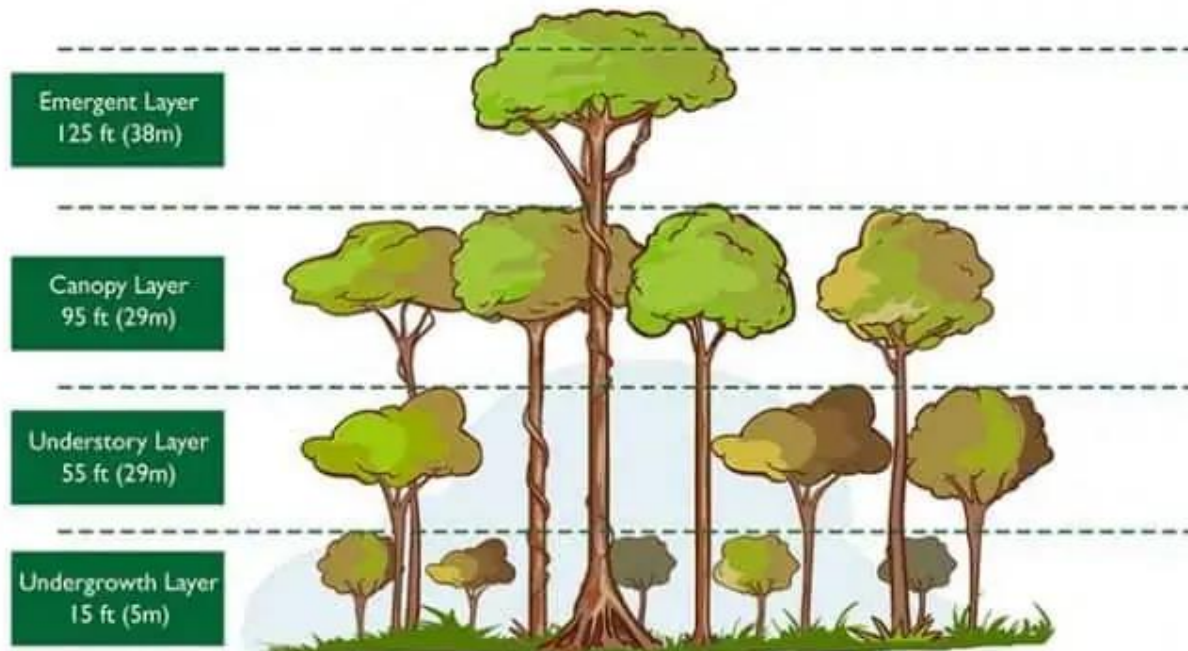
Integrated pest management

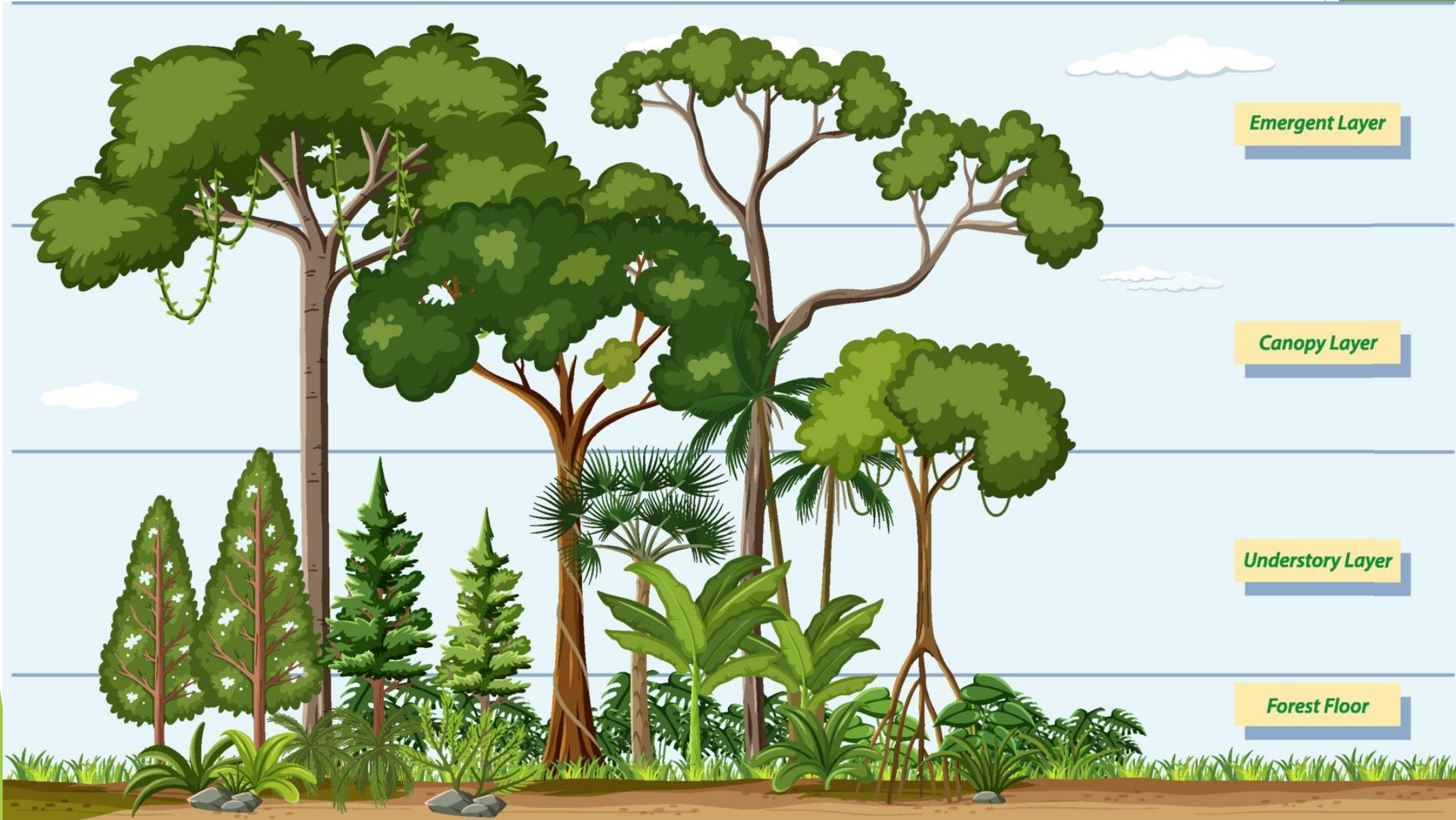




Study and research

Layers of the Rainforest





Emergent Layer

Canopy Layer

Understory Layer

Forest Floor







Community gardens

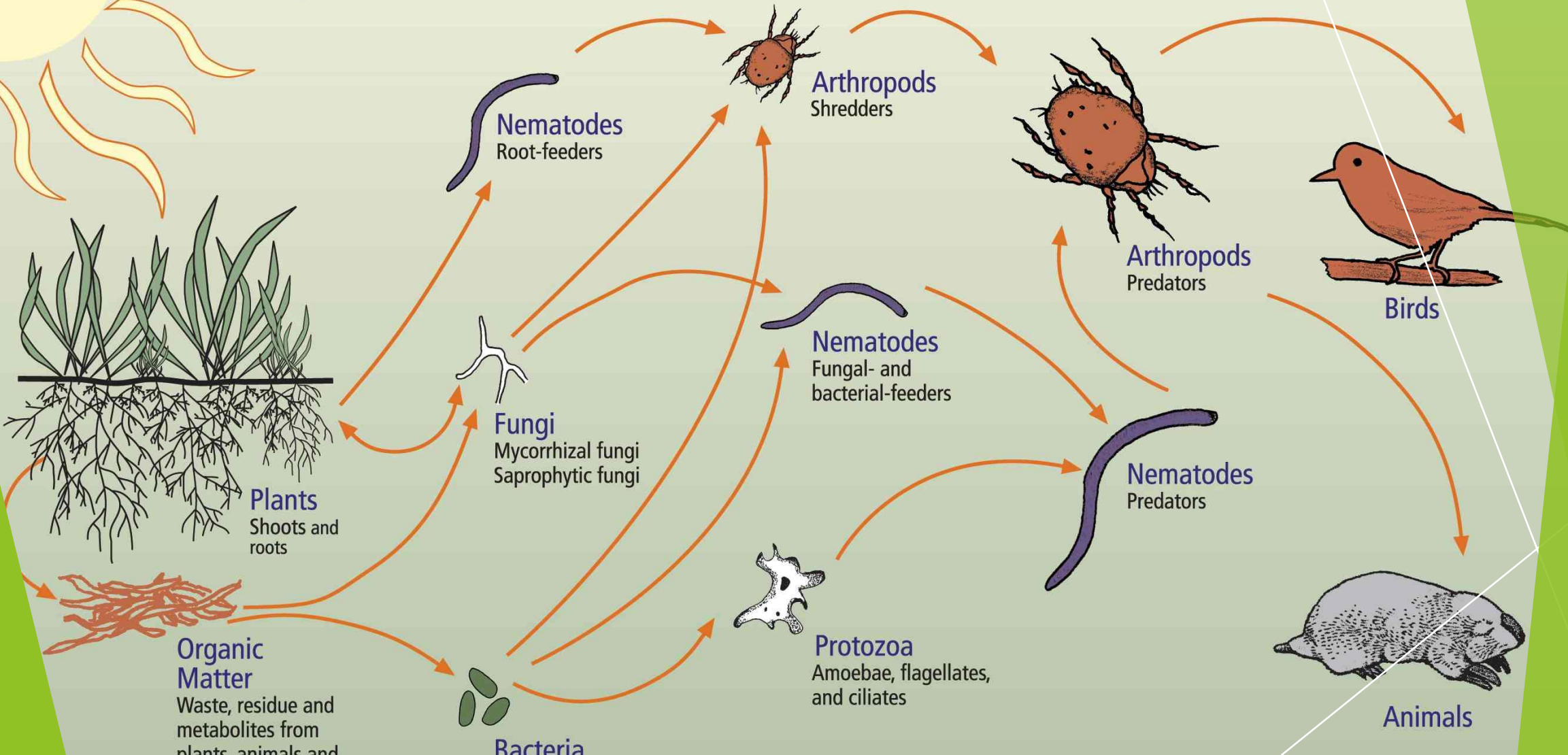


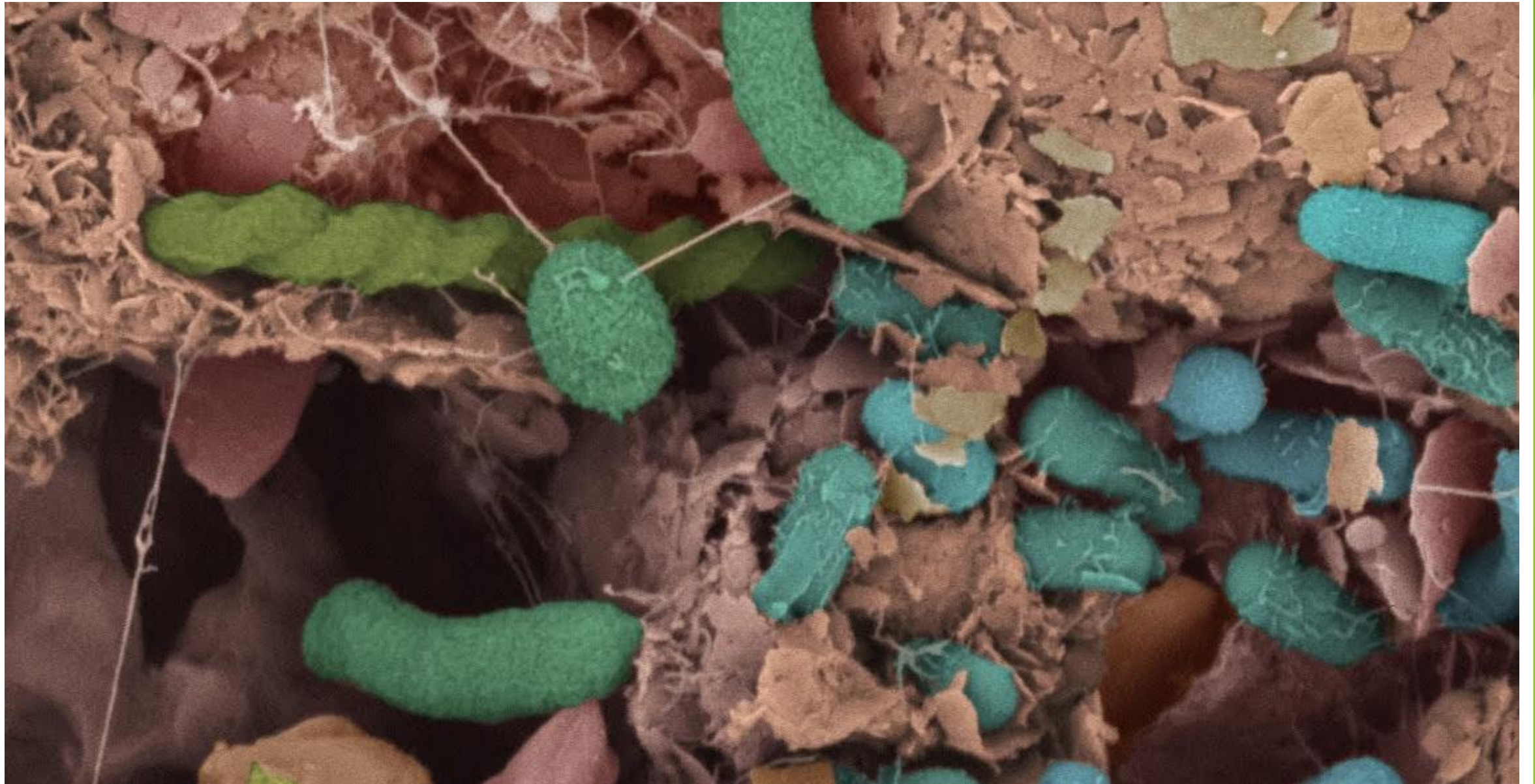


Propagation

- ▶ Mango trees multiplication

The Soil Food Web





BRIX refractometer



Measurements and data

- ▶ 100% of sugar in plant sap
- ▶ GRFFN.org
- ▶ Growing Real Food for Nutrition

