

Small and slow solutions

Designing for resilience session 18/24

Escape from adversity



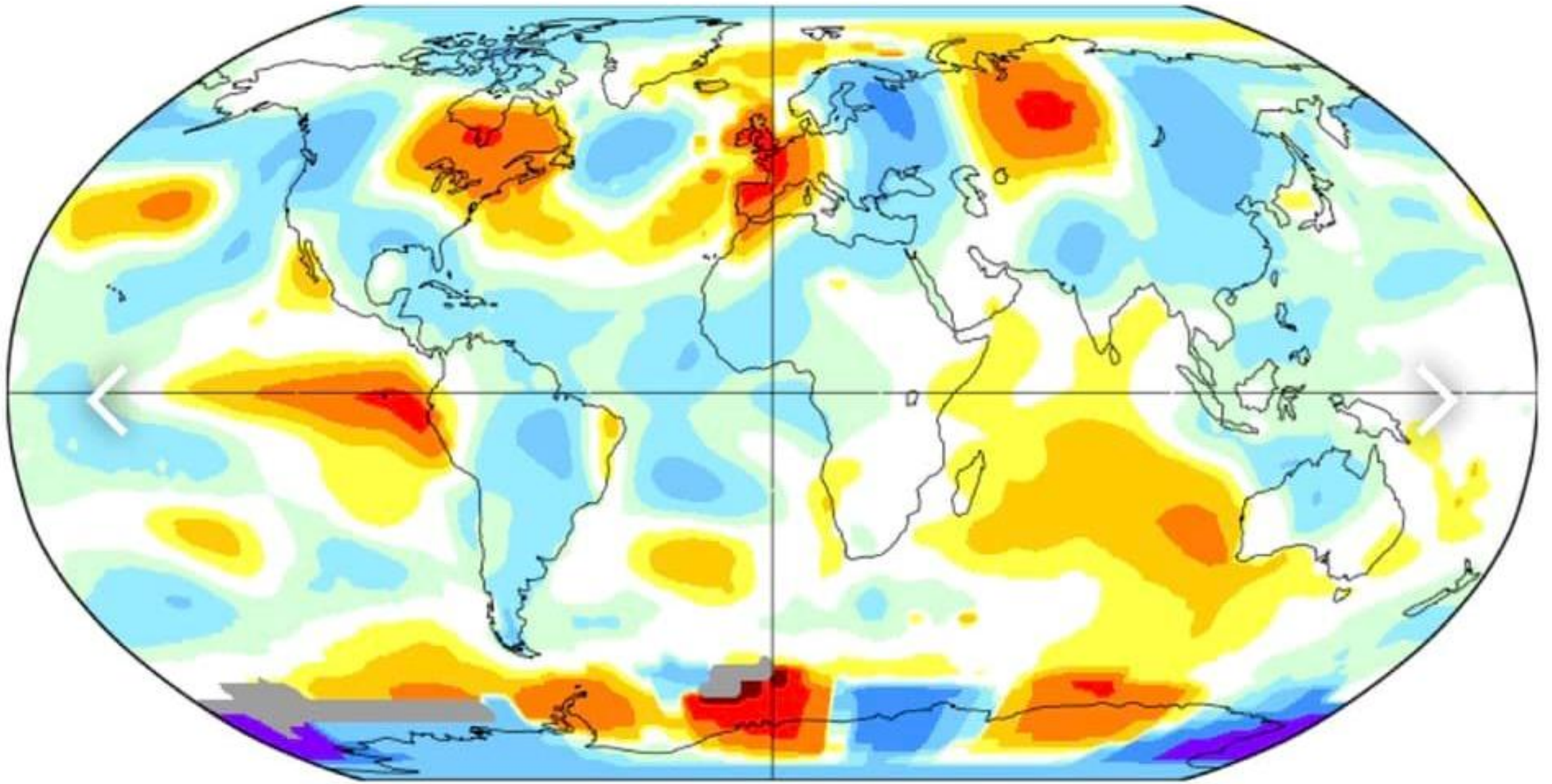


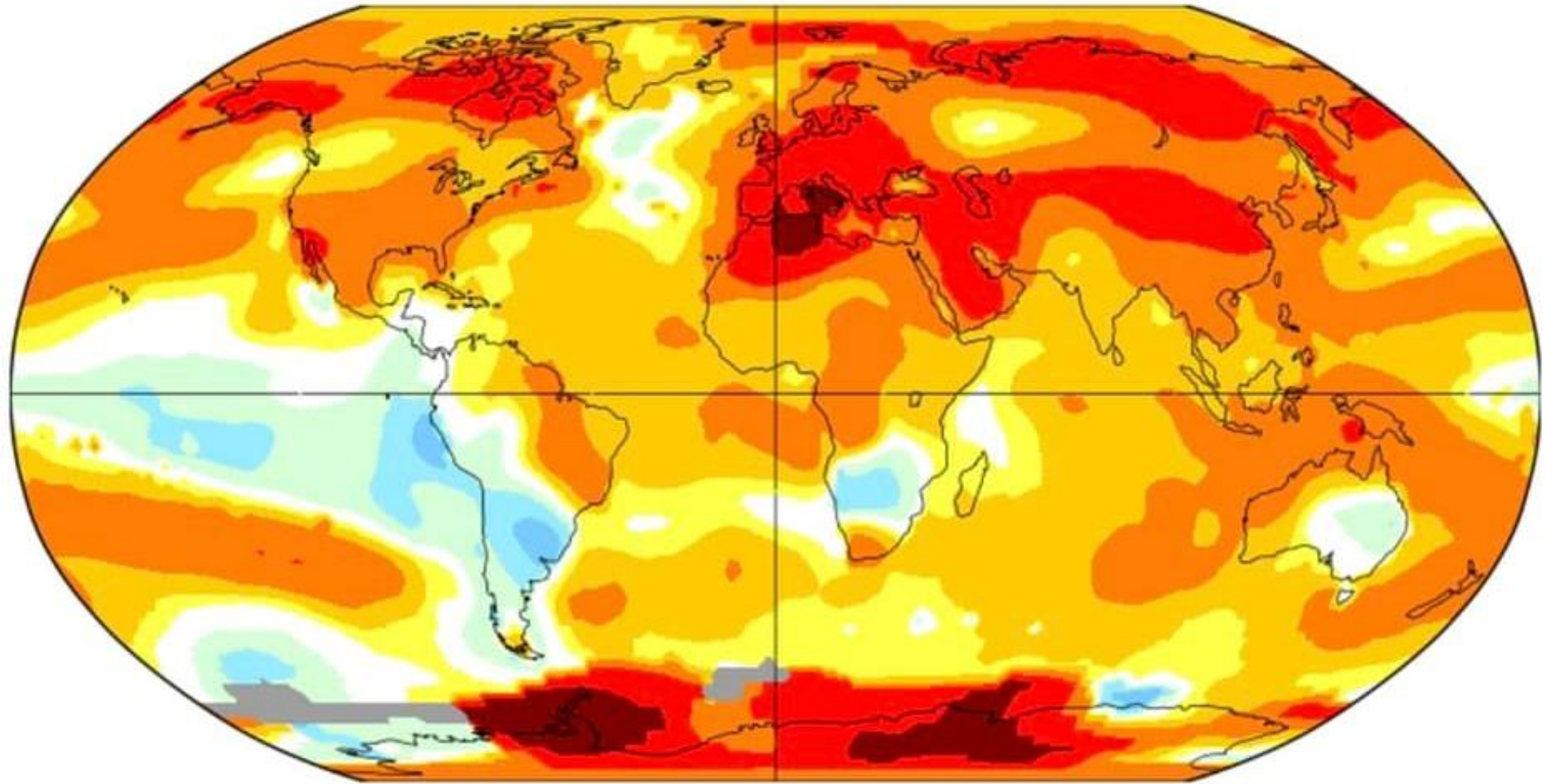
Beltane greetings

- ▶ Halfway from Equinox to summer solstice
- ▶ Start of summer, of main growing season
- ▶ Traditions to entreat nature
- ▶ Asking for a bountiful harvest
- ▶ Making peace with the Gods

Threats and challenges







Climate crisis

- ▶ What can we expect?
- ▶ Energised weather systems
- ▶ Hotter and cooler. More extreme temperatures, at key times

- ▶ Wetter and drier
- ▶ Longer droughts
- ▶ Heavier rainfall
- ▶ Erratic patterns

Social impact

- ▶ Disrupt communities
- ▶ Uneven effect
- ▶ Amplify inequalities
- ▶ Disrupt support services

Economic impact

- ▶ Increased costs of food
- ▶ Cost of materials
- ▶ Disruption of jobs
- ▶ Trade and commerce

Response =
organise

Organise from bottom up to meet local needs with local resources

Be organised to enable help and investment to come from top down, Government, NGO's, Aid agencies, donors

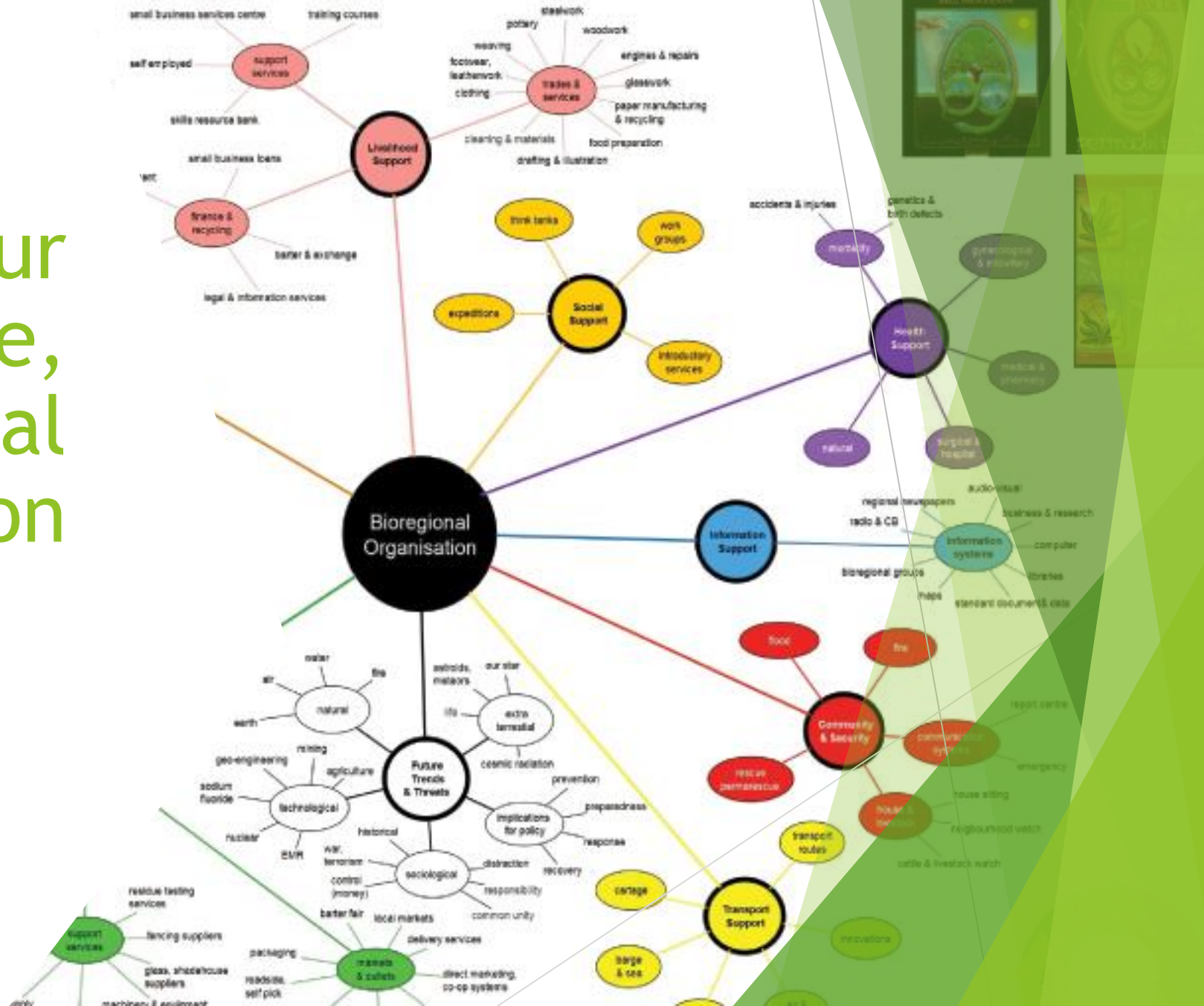


... lies unparalleled opportunity to impose creative order ... "

... The problem is the solution... www.permarescue.org

Building your response, regional organisation

Beyond Command and Control



9 key functions to consider

Food

Buildings

Livelihood

Social

Health

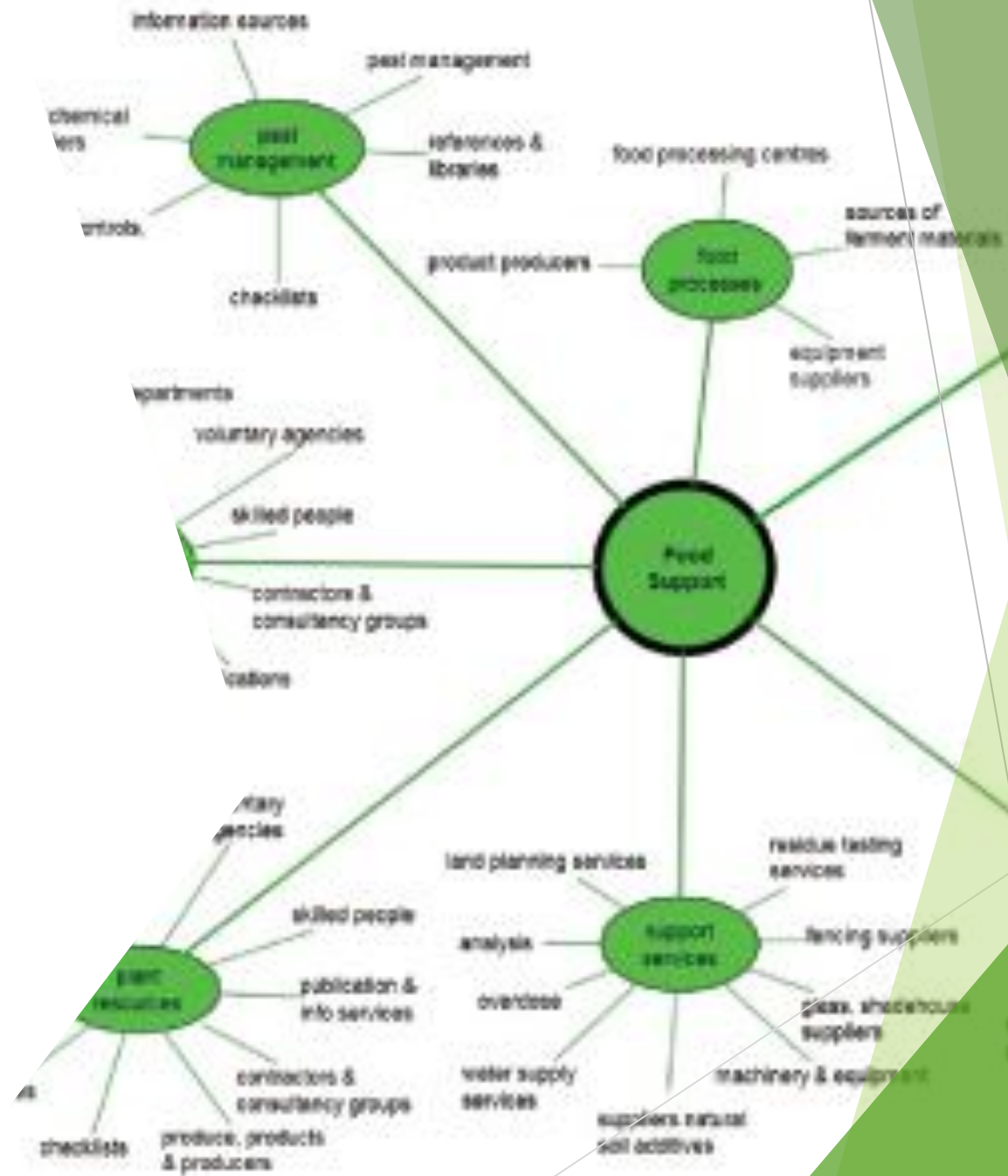
Information

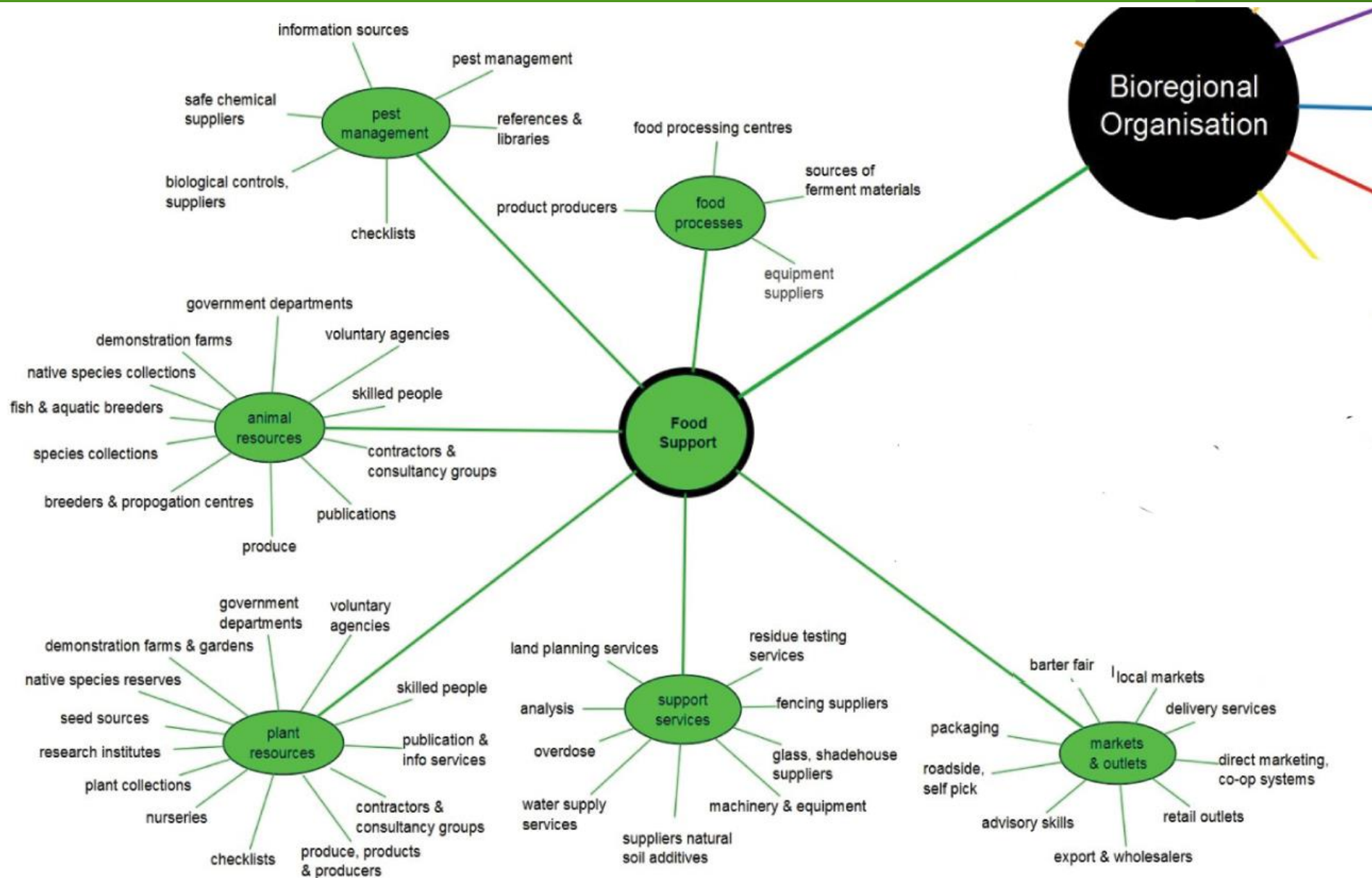
Community
and security

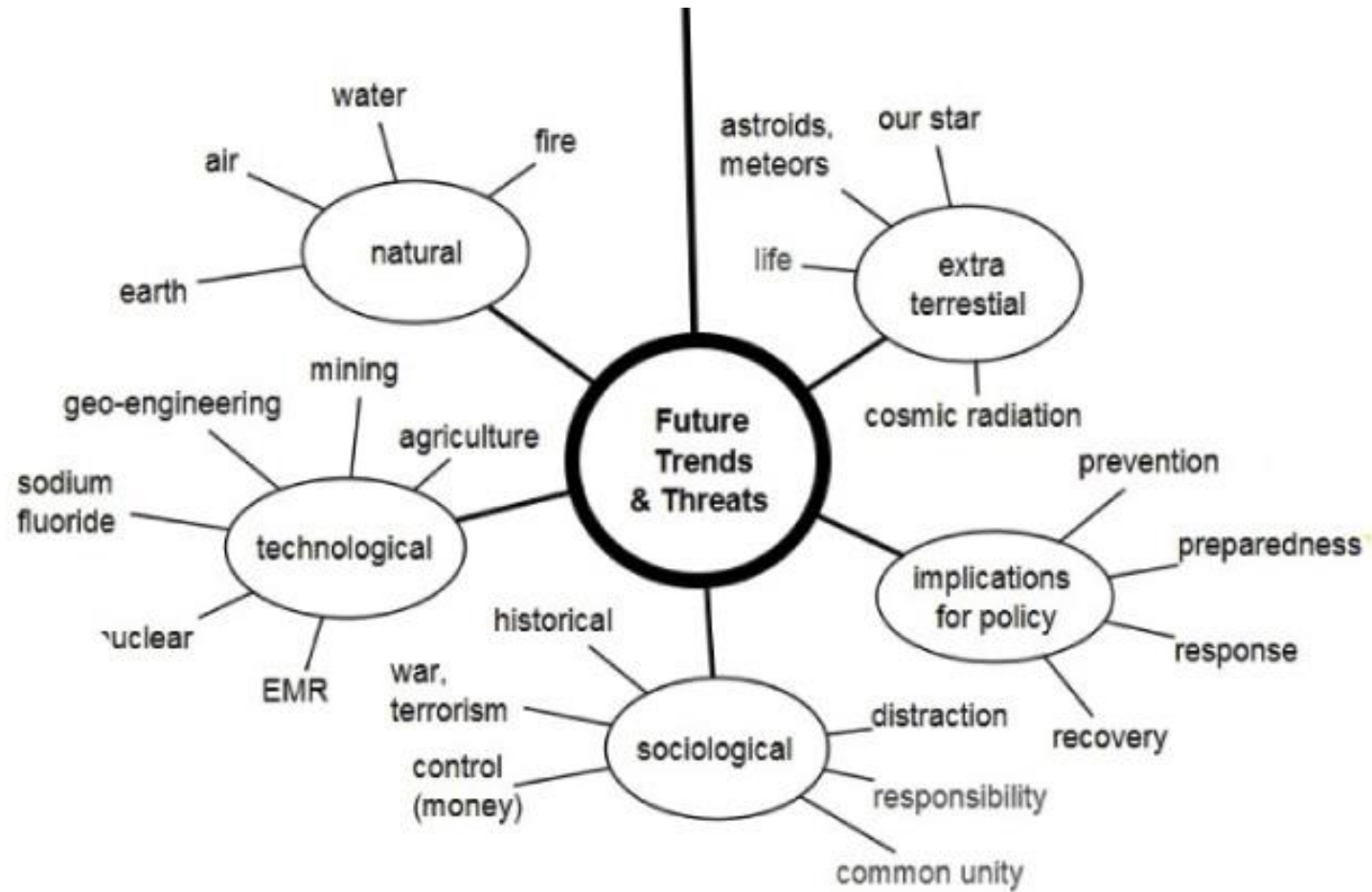
Transport

Future
trends and
threats

FOOD







Future trends and threats

- ▶ Nature
- ▶ Technological
- ▶ Extra terrestrial
- ▶ Sociological
- ▶ Implications for policy and planning

Vetiver hedge

- ▶ At Butambala

